

Datasheet for ABIN1881720
anti-RAB27A antibody (C-Term)[Go to Product page](#)

1 Image

5 Publications

Overview

Quantity:	400 µL
Target:	RAB27A
Binding Specificity:	AA 136-164, C-Term
Reactivity:	Human
Host:	Rabbit
Clonality:	Polyclonal
Conjugate:	This RAB27A antibody is un-conjugated
Application:	Western Blotting (WB)

Product Details

Immunogen:	This RAB27A antibody is generated from rabbits immunized with a KLH conjugated synthetic peptide between 136-164 amino acids from the C-terminal region of human RAB27A.
Clone:	RB42745
Isotype:	Ig Fraction
Predicted Reactivity:	M, Pig, Rat
Purification:	This antibody is purified through a protein A column, followed by peptide affinity purification.

Target Details

Target:	RAB27A
Alternative Name:	RAB27A (RAB27A Products)

Target Details

Background:	The protein encoded by this gene belongs to the small GTPase superfamily, Rab family. The protein is membrane-bound and may be involved in protein transport and small GTPase mediated signal transduction. Mutations in this gene are associated with Griscelli syndrome type 2. Alternative splicing occurs at this locus and four transcript variants encoding the same protein have been identified.
Molecular Weight:	24868
NCBI Accession:	NP_004571 , NP_899057 , NP_899058 , NP_899059
UniProt:	P51159
Pathways:	Peptide Hormone Metabolism

Application Details

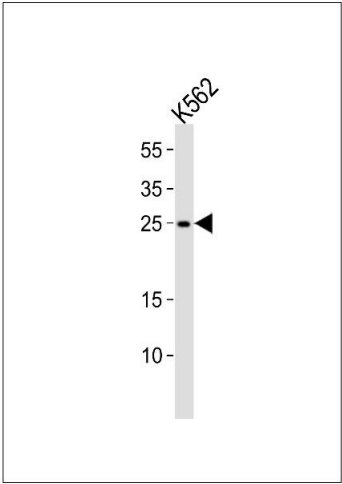
Application Notes:	WB: 1:1000
Restrictions:	For Research Use only

Handling

Format:	Liquid
Buffer:	Purified polyclonal antibody supplied in PBS with 0.09 % (W/V) sodium azide.
Preservative:	Sodium azide
Precaution of Use:	This product contains Sodium azide: a POISONOUS AND HAZARDOUS SUBSTANCE which should be handled by trained staff only.
Storage:	4 °C,-20 °C
Expiry Date:	6 months

Publications

Product cited in:	<p>Akpa, Oyejola: "Modeling the transmission dynamics of HIV/AIDS epidemics: an introduction and a review." in: Journal of infection in developing countries, Vol. 4, Issue 10, pp. 597-608, (2010) (PubMed).</p> <p>Kladney, Cardiff, Kwiatkowski, Chiang, Weber, Arbeit, Lu: "Tuberous sclerosis complex 1: an epithelial tumor suppressor essential to prevent spontaneous prostate cancer in aged mice." in: Cancer research, Vol. 70, Issue 21, pp. 8937-47, (2010) (PubMed).</p>
-------------------	--



Western Blotting

Image 1. Western blot analysis of lysate from K562 cell line, using RAB27A Antibody (C-term) (ABIN1881720 and ABIN2839093). (ABIN1881720 and ABIN2839093) was diluted at 1:1000. A goat anti-rabbit IgG H&L(HRP) at 1:10000 dilution was used as the secondary antibody. Lysate at 35 µg.