

Datasheet for ABIN1881725
anti-RALBP1 antibody (N-Term)[Go to Product page](#)

1 Image

Overview

Quantity:	400 µL
Target:	RALBP1
Binding Specificity:	AA 42-71, N-Term
Reactivity:	Human
Host:	Rabbit
Clonality:	Polyclonal
Conjugate:	This RALBP1 antibody is un-conjugated
Application:	Western Blotting (WB)

Product Details

Immunogen:	This RALBP1 antibody is generated from rabbits immunized with a KLH conjugated synthetic peptide between 42-71 amino acids from the N-terminal region of human RALBP1.
Clone:	RB40405
Isotype:	Ig Fraction
Purification:	This antibody is purified through a protein A column, followed by peptide affinity purification.

Target Details

Target:	RALBP1
Alternative Name:	RALBP1 (RALBP1 Products)
Background:	RALBP1 plays a role in receptor-mediated endocytosis and is a downstream effector of the

Target Details

small GTP-binding protein RAL (see RALA, MIM 179550). Small G proteins, such as RAL, have GDP-bound inactive and GTP-bound active forms, which shift from the inactive to the active state through the action of RALGDS (MIM 601619), which in turn is activated by RAS (see HRAS, MIM 190020) (summary by Feig, 2003 [PubMed 12888294]).

NCBI Accession: [NP_006779](#)

UniProt: [Q15311](#)

Application Details

Application Notes: WB: 1:1000

Restrictions: For Research Use only

Handling

Format: Liquid

Buffer: Purified polyclonal antibody supplied in PBS with 0.09 % (W/V) sodium azide.

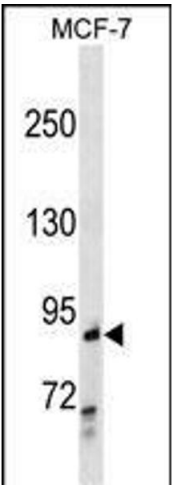
Preservative: Sodium azide

Precaution of Use: This product contains Sodium azide: a POISONOUS AND HAZARDOUS SUBSTANCE which should be handled by trained staff only.

Storage: 4 °C,-20 °C

Expiry Date: 6 months

Images



Western Blotting

Image 1. RALBP1 Antibody (N-term) (ABIN1881725 and ABIN2838379) western blot analysis in MCF-7 cell line lysates (35 µg/lane). This demonstrates the RALBP1 antibody detected the RALBP1 protein (arrow).