

Datasheet for ABIN1881730

anti-Retinoblastoma 1 antibody (AA 586-615)**3** Images**4** Publications[Go to Product page](#)

Overview

Quantity:	400 µL
Target:	Retinoblastoma 1 (RB1)
Binding Specificity:	AA 586-615
Reactivity:	Human
Host:	Rabbit
Clonality:	Polyclonal
Conjugate:	This Retinoblastoma 1 antibody is un-conjugated
Application:	Western Blotting (WB), Immunofluorescence (IF), Immunohistochemistry (Paraffin-embedded Sections) (IHC (p))

Product Details

Immunogen:	This RB1 antibody is generated from rabbits immunized with a KLH conjugated synthetic peptide between 586-615 amino acids from human RB1.
Clone:	RB7977
Isotype:	Ig Fraction
Purification:	This antibody is purified through a protein A column, followed by peptide affinity purification.

Target Details

Target:	Retinoblastoma 1 (RB1)
Alternative Name:	RB1 (RB1 Products)

Target Details

Background:	The retinoblastoma protein is a tumor suppressor protein that is dysfunctional in many types of cancer.[1] One highly studied function of pRb is to prevent excessive cell growth by inhibiting cell cycle progression until a cell is ready to divide. pRb belongs to the pocket protein family, whose members have a pocket for the functional binding of other proteins.[2][3] Should an oncogenic protein, such as those produced by cells infected by high-risk types of human papillomaviruses, bind and inactivate pRb, this can lead to cancer. Retinoblastoma (RB) is an embryonic malignant neoplasm of retinal origin. It almost always presents in early childhood and is often bilateral.
Molecular Weight:	106159
NCBI Accession:	NP_000312
UniProt:	P06400
Pathways:	Cell Division Cycle , Intracellular Steroid Hormone Receptor Signaling Pathway , Mitotic G1-G1/S Phases , DNA Replication , Maintenance of Protein Location , Synthesis of DNA , Autophagy

Application Details

Application Notes:	IF: 1:10~50. WB: 1:1000. IHC-P: 1:10~50
Restrictions:	For Research Use only

Handling

Format:	Liquid
Buffer:	Purified polyclonal antibody supplied in PBS with 0.09 % (W/V) sodium azide.
Preservative:	Sodium azide
Precaution of Use:	This product contains Sodium azide: a POISONOUS AND HAZARDOUS SUBSTANCE which should be handled by trained staff only.
Storage:	4 °C, -20 °C
Expiry Date:	6 months

Publications

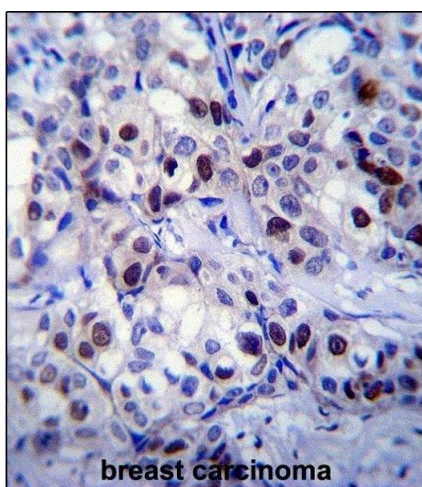
Product cited in:	Dasgupta, Sun, Wang, Fusaro, Betts, Padmanabhan, Sebti, Chellappan: "Disruption of the Rb--Raf-1 interaction inhibits tumor growth and angiogenesis." in: Molecular and cellular biology , Vol. 24, Issue 21, pp. 9527-41, (2004) (PubMed).
-------------------	--

Cui, Shirai, Wakai, Yokoyama, Hirano, Hatakeyama: "Aberrant expression of pRb and p16(INK4), alone or in combination, indicates poor outcome after resection in patients with colorectal carcinoma." in: **Human pathology**, Vol. 35, Issue 10, pp. 1189-95, (2004) ([PubMed](#)).

Borah, Verma, Robertson: "ORF73 of herpesvirus saimiri, a viral homolog of Kaposi's sarcoma-associated herpesvirus, modulates the two cellular tumor suppressor proteins p53 and pRb." in: **Journal of virology**, Vol. 78, Issue 19, pp. 10336-47, (2004) ([PubMed](#)).

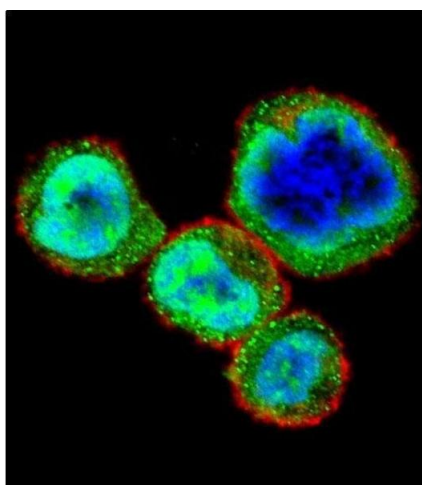
Dasgupta, Betts, Rastogi, Joshi, Morris, Brennan, Ordonez-Ercan, Chellappan: "Direct binding of apoptosis signal-regulating kinase 1 to retinoblastoma protein: novel links between apoptotic signaling and cell cycle machinery." in: **The Journal of biological chemistry**, Vol. 279, Issue 37, pp. 38762-9, (2004) ([PubMed](#)).

Images



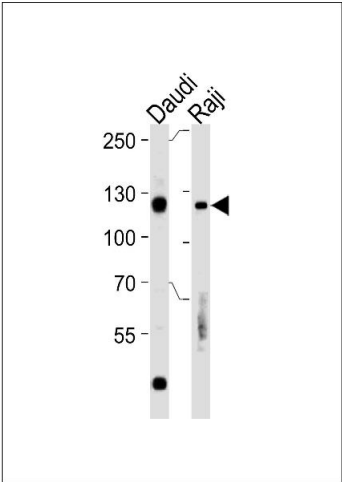
Immunohistochemistry (Paraffin-embedded Sections)

Image 1. RB1 Antibody (ABIN1881730 and ABIN2840685) immunohistochemistry analysis in formalin fixed and paraffin embedded human breast carcinoma followed by peroxidase conjugation of the secondary antibody and DAB staining. This data demonstrates the use of RB1 Antibody for immunohistochemistry. Clinical relevance has not been evaluated.



Immunofluorescence

Image 2. Confocal immunofluorescent analysis of RB1 Antibody (ABIN1881730 and ABIN2840685) with MDA-Mb cell followed by Alexa Fluor 488-conjugated goat anti-rabbit IgG (green). Actin filaments have been labeled with Alexa Fluor 555 phalloidin (red). DAPI was used to stain the cell nuclear (blue).



Western Blotting

Image 3. Rb Antibody (ABIN1881730 and ABIN2840685) western blot analysis in Daudi,Raji cell line lysates (35 μ g/lane).This demonstrates the Rb antibody detected the Rb protein (arrow).