

Datasheet for ABIN1881732
anti-p107 antibody (C-Term)



[Go to Product page](#)

1 Image 3 Publications

Overview

Quantity:	400 µL
Target:	p107 (RBL1)
Binding Specificity:	AA 1007-1035, C-Term
Reactivity:	Human
Host:	Rabbit
Clonality:	Polyclonal
Conjugate:	This p107 antibody is un-conjugated
Application:	Western Blotting (WB)

Product Details

Immunogen:	This RBL1 antibody is generated from rabbits immunized with a KLH conjugated synthetic peptide between 1007-1035 amino acids from the C-terminal region of human RBL1.
Clone:	RB40387
Isotype:	Ig Fraction
Purification:	This antibody is purified through a protein A column, followed by peptide affinity purification.

Target Details

Target:	p107 (RBL1)
Alternative Name:	RBL1 (RBL1 Products)
Background:	The protein encoded by this gene is similar in sequence and possibly function to the product of

Target Details

the retinoblastoma 1 (RB1) gene. The RB1 gene product is a tumor suppressor protein that appears to be involved in cell cycle regulation, as it is phosphorylated in the S to M phase transition and is dephosphorylated in the G1 phase of the cell cycle. Both the RB1 protein and the product of this gene can form a complex with adenovirus E1A protein and SV40 large T-antigen, with the SV40 large T-antigen binding only to the unphosphorylated form of each protein. In addition, both proteins can inhibit the transcription of cell cycle genes containing E2F binding sites in their promoters. Due to the sequence and biochemical similarities with the RB1 protein, it is thought that the protein encoded by this gene may also be a tumor suppressor. Two transcript variants encoding different isoforms have been found for this gene.

Molecular Weight: 120847

NCBI Accession: [NP_002886](#), [NP_899662](#)

UniProt: [P28749](#)

Pathways: [Cell Division Cycle](#), [Mitotic G1-G1/S Phases](#)

Application Details

Application Notes: WB: 1:1000

Restrictions: For Research Use only

Handling

Format: Liquid

Buffer: Purified polyclonal antibody supplied in PBS with 0.09 % (W/V) sodium azide.

Preservative: Sodium azide

Precaution of Use: This product contains Sodium azide: a POISONOUS AND HAZARDOUS SUBSTANCE which should be handled by trained staff only.

Storage: 4 °C, -20 °C

Expiry Date: 6 months

Publications

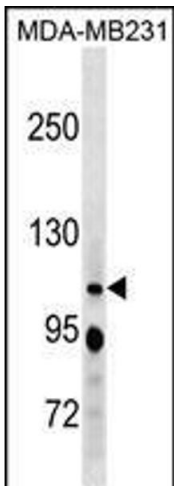
Product cited in: Jayadeva, Kurimchak, Garriga, Sotillo, Davis, Haines, Mumby, Graña: "B55alpha PP2A holoenzymes modulate the phosphorylation status of the retinoblastoma-related protein p107 and its activation." in: **The Journal of biological chemistry**, Vol. 285, Issue 39, pp. 29863-73, (

2010) ([PubMed](#)).

Liu, Wu, Chen, Ter-Minassian, Asomaning, Zhai, Wang, Su, Heist, Kulke, Lin, Liu, Christiani: "A Large-scale genetic association study of esophageal adenocarcinoma risk." in: **Carcinogenesis**, Vol. 31, Issue 7, pp. 1259-63, (2010) ([PubMed](#)).

Cunningham, Vierkant, Sellers, Phelan, Rider, Liebow, Schildkraut, Berchuck, Couch, Wang, Fridley, Gentry-Maharaj, Menon, Hogdall, Kjaer, Whittemore, DiCioccio, Song, Gayther, Ramus, Pharaoh, Goode: "Cell cycle genes and ovarian cancer susceptibility: a tagSNP analysis." in: **British journal of cancer**, Vol. 101, Issue 8, pp. 1461-8, (2009) ([PubMed](#)).

Images



Western Blotting

Image 1. RBL1 Antibody (C-term) (ABIN1881732 and ABIN2838377) western blot analysis in MDA-M cell line lysates (35 µg/lane). This demonstrates the RBL1 antibody detected the RBL1 protein (arrow).