



Datasheet for ABIN1881733
anti-RBM7 antibody (C-Term)



[Go to Product page](#)

1 Image

3 Publications

Overview

Quantity:	400 µL
Target:	RBM7
Binding Specificity:	AA 196-222, C-Term
Reactivity:	Human, Mouse
Host:	Rabbit
Clonality:	Polyclonal
Application:	Western Blotting (WB)

Product Details

Immunogen:	This RBM7 antibody is generated from rabbits immunized with a KLH conjugated synthetic peptide between 196-222 amino acids from the C-terminal region of human RBM7.
Clone:	RB39651
Isotype:	Ig Fraction
Purification:	This antibody is purified through a protein A column, followed by peptide affinity purification.

Target Details

Target:	RBM7
Alternative Name:	RBM7 (RBM7 Products)
Background:	Possible involved in germ cell RNA processing and meiosis.
Molecular Weight:	30504

Target Details

NCBI Accession: [NP_057174](#)

UniProt: [Q9Y580](#)

Application Details

Application Notes: WB: 1:1000

Restrictions: For Research Use only

Handling

Format: Liquid

Buffer: Purified polyclonal antibody supplied in PBS with 0.09 % (W/V) sodium azide.

Preservative: Sodium azide

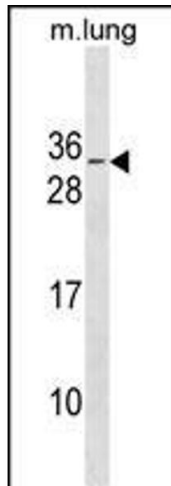
Precaution of Use: This product contains Sodium azide: a POISONOUS AND HAZARDOUS SUBSTANCE which should be handled by trained staff only.

Storage: 4 °C, -20 °C

Expiry Date: 6 months

Publications

Product cited in: Mei, Li, Chu, Yiu, Lo: "The inhibitory effects of silver diamine fluoride at different concentrations on matrix metalloproteinases." in: **Dental materials : official publication of the Academy of Dental Materials**, Vol. 28, Issue 8, pp. 903-8, (2012) ([PubMed](#)).



Western Blotting

Image 1. RBM7 Antibody (C-term) (ABIN1881733 and ABIN2838623) western blot analysis in mouse lung tissue lysates (35 µg/lane). This demonstrates the RBM7 antibody detected the RBM7 protein (arrow).