

Datasheet for ABIN1881774
anti-SAPS2 antibody (AA 565-593)[Go to Product page](#)

1 Image

Overview

Quantity:	400 µL
Target:	SAPS2
Binding Specificity:	AA 565-593
Reactivity:	Human
Host:	Rabbit
Clonality:	Polyclonal
Conjugate:	This SAPS2 antibody is un-conjugated
Application:	Western Blotting (WB)

Product Details

Immunogen:	This SAPS2 antibody is generated from rabbits immunized with a KLH conjugated synthetic peptide between 565-593 amino acids from the Central region of human SAPS2.
Clone:	RB40451
Isotype:	Ig Fraction
Predicted Reactivity:	M
Purification:	This antibody is purified through a protein A column, followed by peptide affinity purification.

Target Details

Target:	SAPS2
Alternative Name:	SAPS2 (SAPS2 Products)

Target Details

Background:	Regulatory subunit of protein phosphatase 6 (PP6). May function as a scaffolding PP6 subunit. Involved in the PP6-mediated dephosphorylation of NFKBIE opposing its degradation in response to TNF-alpha.
Molecular Weight:	104942
NCBI Accession:	NP_001229827 , NP_001229828 , NP_001229829 , NP_055493
UniProt:	O75170

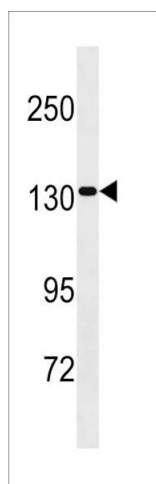
Application Details

Application Notes:	WB: 1:1000
Restrictions:	For Research Use only

Handling

Format:	Liquid
Buffer:	Purified polyclonal antibody supplied in PBS with 0.09 % (W/V) sodium azide.
Preservative:	Sodium azide
Precaution of Use:	This product contains Sodium azide: a POISONOUS AND HAZARDOUS SUBSTANCE which should be handled by trained staff only.
Storage:	4 °C,-20 °C
Expiry Date:	6 months

Images



Western Blotting

Image 1. SS2 Antibody (Center) 20308c western blot analysis in HepG2 cell line lysates (35 µg/lane). This demonstrates the SS2 antibody detected the SS2 protein (arrow).