



[Go to Product page](#)

Datasheet for ABIN1881780
anti-SDHA antibody (C-Term)

2 Images

3 Publications

Overview

Quantity:	400 µL
Target:	SDHA
Binding Specificity:	AA 577-605, C-Term
Reactivity:	Human
Host:	Rabbit
Clonality:	Polyclonal
Conjugate:	This SDHA antibody is un-conjugated
Application:	Western Blotting (WB), Immunohistochemistry (Paraffin-embedded Sections) (IHC (p))

Product Details

Immunogen:	This SDHA antibody is generated from rabbits immunized with a KLH conjugated synthetic peptide between 577-605 amino acids from the C-terminal region of human SDHA.
Clone:	RB42344
Isotype:	Ig Fraction
Predicted Reactivity:	X, Rat
Purification:	This antibody is purified through a protein A column, followed by peptide affinity purification.

Target Details

Target:	SDHA
Alternative Name:	SDHA (SDHA Products)

Target Details

Background:	Flavoprotein (FP) subunit of succinate dehydrogenase (SDH) that is involved in complex II of the mitochondrial electron transport chain and is responsible for transferring electrons from succinate to ubiquinone (coenzyme Q). Can act as a tumor suppressor.
Molecular Weight:	72692
NCBI Accession:	NP_004159
UniProt:	P31040

Application Details

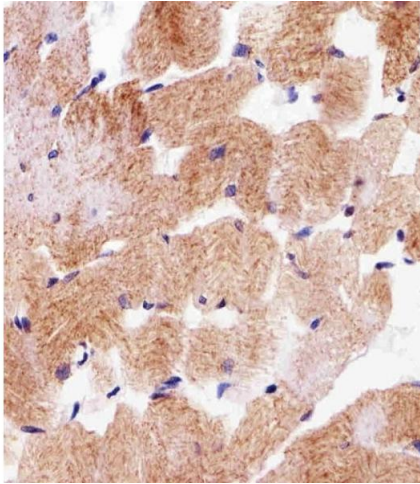
Application Notes:	WB: 1:1000. IHC-P: 1:25
Restrictions:	For Research Use only

Handling

Format:	Liquid
Buffer:	Purified polyclonal antibody supplied in PBS with 0.09 % (W/V) sodium azide.
Preservative:	Sodium azide
Precaution of Use:	This product contains Sodium azide: a POISONOUS AND HAZARDOUS SUBSTANCE which should be handled by trained staff only.
Storage:	4 °C,-20 °C
Expiry Date:	6 months

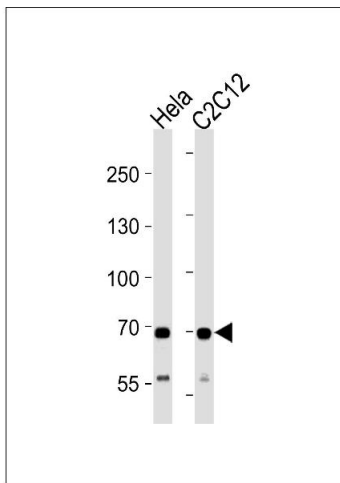
Publications

Product cited in:	<p>Akpa, Oyejola: "Modeling the transmission dynamics of HIV/AIDS epidemics: an introduction and a review." in: Journal of infection in developing countries, Vol. 4, Issue 10, pp. 597-608, (2010) (PubMed).</p> <p>Kladney, Cardiff, Kwiatkowski, Chiang, Weber, Arbeit, Lu: "Tuberous sclerosis complex 1: an epithelial tumor suppressor essential to prevent spontaneous prostate cancer in aged mice." in: Cancer research, Vol. 70, Issue 21, pp. 8937-47, (2010) (PubMed).</p>
-------------------	--



Immunohistochemistry (Paraffin-embedded Sections)

Image 1. Immunohistochemical analysis of paraffin-embedded H. skeletal muscle section using SDHA Antibody (C-term) B. B was diluted at 1:25 dilution. A undiluted biotinylated goat polyvalent antibody was used as the secondary, followed by DAB staining.



Western Blotting

Image 2. SDHA Antibody (C-term) (ABIN1881780 and ABIN2843409) western blot analysis in HeLa and mouse C2C12 cell line lysates (35 µg/lane). This demonstrates the SDHA antibody detected the SDHA protein (arrowhead).