

Datasheet for ABIN1881782  
**anti-SDHB antibody (AA 137-162)**



[Go to Product page](#)

1 Image

## Overview

Quantity:	400 µL
Target:	SDHB
Binding Specificity:	AA 137-162
Reactivity:	Human, Mouse, Rat, Zebrafish (Danio rerio)
Host:	Rabbit
Clonality:	Polyclonal
Conjugate:	This SDHB antibody is un-conjugated
Application:	Western Blotting (WB)

## Product Details

Immunogen:	This DANRE sdhb antibody is generated from rabbits immunized with a KLH conjugated synthetic peptide between 137-162 amino acids from the Central region of DANRE sdhb.
Isotype:	Ig Fraction
Predicted Reactivity:	B, C, Pig
Purification:	This antibody is purified through a protein A column, followed by peptide affinity purification.

## Target Details

Target:	SDHB
Alternative Name:	sdhb ( <a href="#">SDHB Products</a> )
Background:	Iron-sulfur protein (IP) subunit of succinate dehydrogenase (SDH) that is involved in complex II

Target Details

	of the mitochondrial electron transport chain and is responsible for transferring electrons from succinate to ubiquinone (coenzyme Q) (By similarity).
Molecular Weight:	31740
NCBI Accession:	<a href="#">NP_001092210</a>
UniProt:	<a href="#">A5PL98</a>

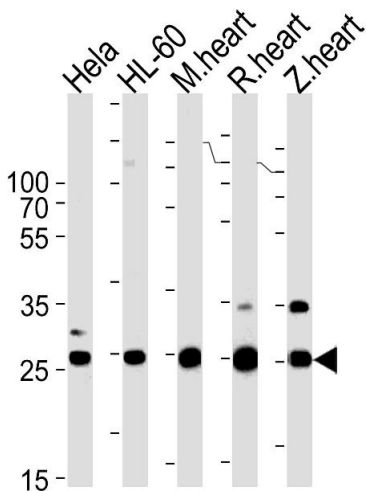
Application Details

Application Notes:	WB: 1:1000
Restrictions:	For Research Use only

Handling

Format:	Liquid
Buffer:	Purified polyclonal antibody supplied in PBS with 0.09 % (W/V) sodium azide.
Preservative:	Sodium azide
Precaution of Use:	This product contains Sodium azide: a POISONOUS AND HAZARDOUS SUBSTANCE which should be handled by trained staff only.
Storage:	4 °C,-20 °C
Expiry Date:	6 months

Images



**Western Blotting**

**Image 1.** DANRE sdhb Antibody Azb10040a western blot analysis in HeLa,HL-60 cell line,mouse heart,rat heart,zebra fish heart tissue lysates (35 µg/lane).This demonstrates the DANRE sdhb antibody detected the DANRE sdhb protein (arrow).