



Datasheet for ABIN1881786
anti-SEMA6B antibody (C-Term)



[Go to Product page](#)

1 Image

Overview

Quantity:	400 µL
Target:	SEMA6B
Binding Specificity:	AA 830-859, C-Term
Reactivity:	Human, Rat
Host:	Rabbit
Clonality:	Polyclonal
Conjugate:	This SEMA6B antibody is un-conjugated
Application:	Western Blotting (WB)

Product Details

Immunogen:	This SEMA6B antibody is generated from rabbits immunized with a KLH conjugated synthetic peptide between 830-859 amino acids from the C-terminal region of human SEMA6B.
Clone:	RB44411
Isotype:	Ig Fraction
Purification:	This antibody is purified through a protein A column, followed by peptide affinity purification.

Target Details

Target:	SEMA6B
Alternative Name:	SEMA6B (SEMA6B Products)
Background:	May play a role in both peripheral and central nervous system development (By similarity).

Target Details

Molecular Weight: 95285

NCBI Accession: [NP_115484](#)

UniProt: [Q9H3T3](#)

Application Details

Application Notes: WB: 1:1000

Restrictions: For Research Use only

Handling

Format: Liquid

Buffer: Purified polyclonal antibody supplied in PBS with 0.09 % (W/V) sodium azide.

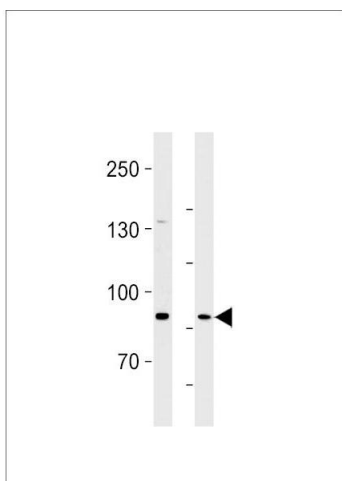
Preservative: Sodium azide

Precaution of Use: This product contains Sodium azide: a POISONOUS AND HAZARDOUS SUBSTANCE which should be handled by trained staff only.

Storage: 4 °C,-20 °C

Expiry Date: 6 months

Images



Western Blotting

Image 1. SEB Antibody (C-term) (ABIN1881786 and ABIN2843375) western blot analysis in U87-MG cell line and rat brain lysates (35 µg/lane). This demonstrates the SEB antibody detected the SEB protein (arrow).