

Datasheet for ABIN1881790  
**anti-SERPINA7 antibody (N-Term)**[Go to Product page](#)

## 1 Image

## Overview

|                      |   |
|----------------------|---|
| Quantity:            | 400 µL                                  |
| Target:              | SERPINA7                                |
| Binding Specificity: | AA 37-65, N-Term                        |
| Reactivity:          | Human                                   |
| Host:                | Rabbit                                  |
| Clonality:           | Polyclonal                              |
| Conjugate:           | This SERPINA7 antibody is un-conjugated |
| Application:         | Western Blotting (WB)                   |

## Product Details

|               |  |
|---------------|--|
| Immunogen:    | This SERPINA7 antibody is generated from rabbits immunized with a KLH conjugated synthetic peptide between 37-65 amino acids from the N-terminal region of human SERPINA7. |
| Clone:        | RB18486  |
| Isotype:      | Ig Fraction  |
| Purification: | This antibody is purified through a protein A column, followed by peptide affinity purification.   |

## Target Details

|                   |  |
|-------------------|--|
| Target:           | SERPINA7   |
| Alternative Name: | SERPINA7 ( <a href="#">SERPINA7 Products</a> )   |
| Background:       | SERPINA7 is the major thyroid hormone transport protein in man (summarized by Mori et al., |

## Target Details

|                   |  |
|-------------------|--|
|                   | 1995 [PubMed 8530630]). Inherited abnormalities in the level of serum TBG have been classified as partial deficiency, complete deficiency, and excess. Patients are euthyroid. |
| Molecular Weight: | 46325  |
| NCBI Accession:   | <a href="#">NP_000345</a>  |
| UniProt:          | <a href="#">P05543</a>   |
| Pathways:         | <a href="#">Hormone Transport</a>  |

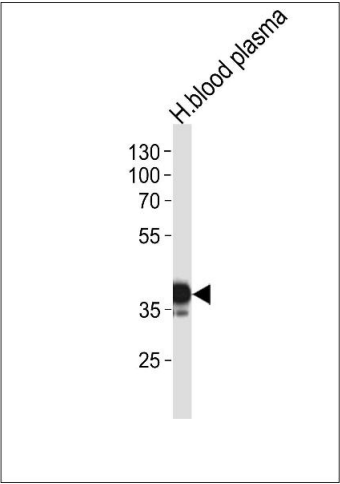
## Application Details

|                    |                       |
|--------------------|-----------------------|
| Application Notes: | WB: 1:1000            |
| Restrictions:      | For Research Use only |

## Handling

|                    |  |
|--------------------|--|
| Format:            | Liquid   |
| Buffer:            | Purified polyclonal antibody supplied in PBS with 0.09 % (W/V) sodium azide.   |
| Preservative:      | Sodium azide   |
| Precaution of Use: | This product contains Sodium azide: a POISONOUS AND HAZARDOUS SUBSTANCE which should be handled by trained staff only. |
| Storage:           | 4 °C,-20 °C  |
| Expiry Date:       | 6 months   |

## Images



### Western Blotting

**Image 1.** SERPINA7 Antibody (N-term) (ABIN1881790 and ABIN2840964) western blot analysis in human blood plasma tissue lysates (35 µg/lane). This demonstrates the SERPINA7 antibody detected the SERPINA7 protein (arrow).