



[Go to Product page](#)

Datasheet for ABIN1881792

## anti-SERPINB9 antibody (AA 122-150)

### 1 Image

#### Overview

Quantity:	400 µL
Target:	SERPINB9
Binding Specificity:	AA 122-150
Reactivity:	Human
Host:	Rabbit
Clonality:	Polyclonal
Conjugate:	This SERPINB9 antibody is un-conjugated
Application:	Western Blotting (WB)

#### Product Details

Immunogen:	This SERPINB9 antibody is generated from rabbits immunized with a KLH conjugated synthetic peptide between 122-150 amino acids from the Central region of human SERPINB9.
Clone:	RB41820
Isotype:	Ig Fraction
Purification:	This antibody is purified through a protein A column, followed by peptide affinity purification.

#### Target Details

Target:	SERPINB9
Alternative Name:	SERPINB9 ( <a href="#">SERPINB9 Products</a> )
Background:	PI9 belongs to the large superfamily of serine proteinase inhibitors (serpins), which bind to and

## Target Details

inactivate serine proteinases. These interactions are involved in many cellular processes, including coagulation, fibrinolysis, complement fixation, matrix remodeling, and apoptosis (Sprecher et al., 1995 [PubMed 8530382]).

Molecular Weight: 42404

NCBI Accession: [NP\\_004146](#)

UniProt: [P50453](#)

## Application Details

Application Notes: WB: 1:1000

Restrictions: For Research Use only

## Handling

Format: Liquid

Buffer: Purified polyclonal antibody supplied in PBS with 0.09 % (W/V) sodium azide.

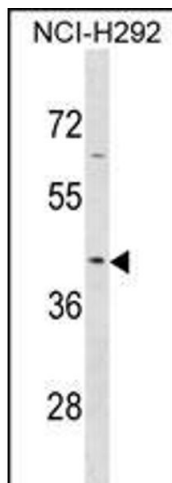
Preservative: Sodium azide

Precaution of Use: This product contains Sodium azide: a POISONOUS AND HAZARDOUS SUBSTANCE which should be handled by trained staff only.

Storage: 4 °C,-20 °C

Expiry Date: 6 months

## Images



### Western Blotting

**Image 1.** SERPINB9 Antibody (Center) (ABIN1881792 and ABIN2838876) western blot analysis in NCI- cell line lysates (35 µg/lane). This demonstrates the SERPINB9 antibody detected the SERPINB9 protein (arrow).