



Datasheet for ABIN1881793  
**anti-SETD1A antibody (AA 927-956)**



[Go to Product page](#)

1 Image

Overview

Quantity:	400 µL
Target:	SETD1A
Binding Specificity:	AA 927-956
Reactivity:	Human
Host:	Rabbit
Clonality:	Polyclonal
Conjugate:	This SETD1A antibody is un-conjugated
Application:	Western Blotting (WB)

Product Details

Immunogen:	This SETD1A antibody is generated from rabbits immunized with a KLH conjugated synthetic peptide between 927-956 amino acids from the Central region of human SETD1A.
Clone:	RB41018
Isotype:	Ig Fraction
Purification:	This antibody is purified through a protein A column, followed by peptide affinity purification.

Target Details

Target:	SETD1A
Alternative Name:	SETD1A ( <a href="#">SETD1A Products</a> )
Background:	SET1A is a component of a histone methyltransferase (HMT) complex that produces mono-, di-

## Target Details

, and trimethylated histone H3 at Lys4. The complex is the analog of the *S. cerevisiae* Set1/COMPASS complex (Lee and Skalnik, 2005 [PubMed 16253997]). Also see SET1B (MIM 611055).

Molecular Weight: 186034

NCBI Accession: [NP\\_055527](#)

UniProt: [O15047](#)

## Application Details

Application Notes: WB: 1:1000

Restrictions: For Research Use only

## Handling

Format: Liquid

Buffer: Purified polyclonal antibody supplied in PBS with 0.09 % (W/V) sodium azide.

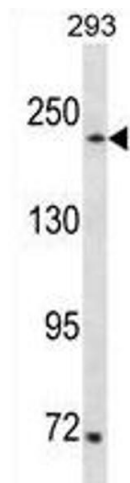
Preservative: Sodium azide

Precaution of Use: This product contains Sodium azide: a POISONOUS AND HAZARDOUS SUBSTANCE which should be handled by trained staff only.

Storage: 4 °C,-20 °C

Expiry Date: 6 months

## Images



### Western Blotting

**Image 1.** SETD1A Antibody (Center) (ABIN1881793 and ABIN2838738) western blot analysis in 293 cell line lysates (35 µg/lane). This demonstrates the SETD1A antibody detected the SETD1A protein (arrow).