

Datasheet for ABIN1881798
anti-SGCE antibody (C-Term)[Go to Product page](#)

1 Image

Overview

Quantity:	400 µL
Target:	SGCE
Binding Specificity:	AA 351-379, C-Term
Reactivity:	Human
Host:	Rabbit
Clonality:	Polyclonal
Conjugate:	This SGCE antibody is un-conjugated
Application:	Western Blotting (WB)

Product Details

Immunogen:	This SGCE antibody is generated from rabbits immunized with a KLH conjugated synthetic peptide between 351-379 amino acids from the C-terminal region of human SGCE.
Clone:	RB40196
Isotype:	Ig Fraction
Predicted Reactivity:	B, Pr, M, Rat
Purification:	This antibody is purified through a protein A column, followed by peptide affinity purification.

Target Details

Target:	SGCE
Alternative Name:	SGCE (SGCE Products)

Target Details

Background:	Component of the sarcoglycan complex, a subcomplex of the dystrophin-glycoprotein complex which forms a link between the F-actin cytoskeleton and the extracellular matrix.
Molecular Weight:	49851
NCBI Accession:	NP_001092870 , NP_001092871 , NP_003910
UniProt:	O43556

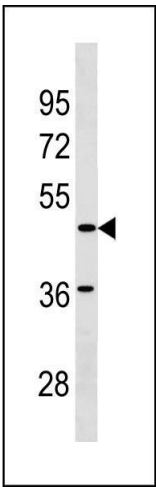
Application Details

Application Notes:	WB: 1:1000
Restrictions:	For Research Use only

Handling

Format:	Liquid
Buffer:	Purified polyclonal antibody supplied in PBS with 0.09 % (W/V) sodium azide.
Preservative:	Sodium azide
Precaution of Use:	This product contains Sodium azide: a POISONOUS AND HAZARDOUS SUBSTANCE which should be handled by trained staff only.
Storage:	4 °C, -20 °C
Expiry Date:	6 months

Images



Western Blotting

Image 1. SGCE Antibody (C-term) (ABIN1881798 and ABIN2843211) western blot analysis in cell line lysates (35 µg/lane). This demonstrates the SGCE antibody detected the SGCE protein (arrow).