

Datasheet for ABIN1881799
anti-SGCG antibody (AA 145-172)[2 Images](#)[5 Publications](#)[Go to Product page](#)

Overview

Quantity:	400 µL
Target:	SGCG
Binding Specificity:	AA 145-172
Reactivity:	Human
Host:	Rabbit
Clonality:	Polyclonal
Application:	Western Blotting (WB), Immunohistochemistry (Paraffin-embedded Sections) (IHC (p))

Product Details

Immunogen:	This SGCG antibody is generated from rabbits immunized with a KLH conjugated synthetic peptide between 145-172 amino acids from the Central region of human SGCG.
Isotype:	Ig Fraction
Predicted Reactivity:	B
Purification:	This antibody is purified through a protein A column, followed by peptide affinity purification.

Target Details

Target:	SGCG
Alternative Name:	SGCG (SGCG Products)
Background:	Component of the sarcoglycan complex, a subcomplex of the dystrophin-glycoprotein complex which forms a link between the F-actin cytoskeleton and the extracellular matrix.

Target Details

Molecular Weight:	32379
NCBI Accession:	NP_000222
UniProt:	Q13326

Application Details

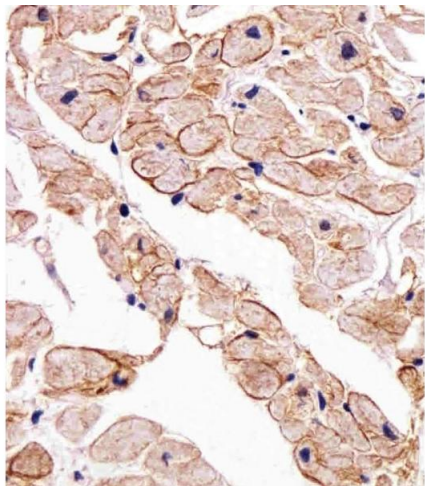
Application Notes:	WB: 1:1000. IHC-P: 1:25
Restrictions:	For Research Use only

Handling

Format:	Liquid
Buffer:	Purified polyclonal antibody supplied in PBS with 0.09 % (W/V) sodium azide.
Preservative:	Sodium azide
Precaution of Use:	This product contains Sodium azide: a POISONOUS AND HAZARDOUS SUBSTANCE which should be handled by trained staff only.
Storage:	4 °C,-20 °C
Expiry Date:	6 months

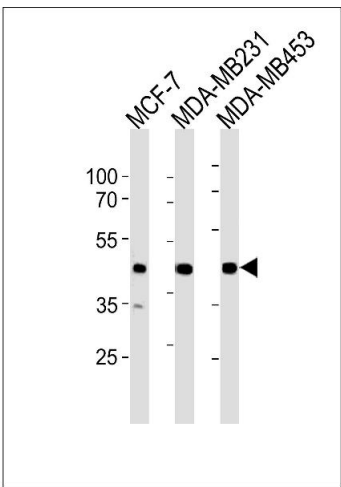
Publications

Product cited in:	Mei, Li, Chu, Yiu, Lo: "The inhibitory effects of silver diamine fluoride at different concentrations on matrix metalloproteinases." in: Dental materials : official publication of the Academy of Dental Materials , Vol. 28, Issue 8, pp. 903-8, (2012) (PubMed).
-------------------	--



Immunohistochemistry (Paraffin-embedded Sections)

Image 1. Immunohistochemical analysis of paraffin-embedded H. heart section using SGCG Antibody (Center) C. C was diluted at 1:25 dilution. A undiluted biotinylated goat polyvalent antibody was used as the secondary, followed by DAB staining.



Western Blotting

Image 2. SGCG Antibody (Center) (ABIN1881799 and ABIN2843437) western blot analysis in MCF-7,MDA-M,MDA-M cell line lysates (35 µg/lane).This demonstrates the SGCG antibody detected the SGCG protein (arrow).