



Datasheet for ABIN1881801
anti-SGSM1 antibody (AA 624-652)



[Go to Product page](#)

2 Images

Overview

Quantity:	400 µL
Target:	SGSM1
Binding Specificity:	AA 624-652
Reactivity:	Human
Host:	Rabbit
Clonality:	Polyclonal
Conjugate:	This SGSM1 antibody is un-conjugated
Application:	Western Blotting (WB)

Product Details

Immunogen:	This SGSM1 antibody is generated from rabbits immunized with a KLH conjugated synthetic peptide between 624-652 amino acids from the Central region of human SGSM1.
Clone:	RB42725
Isotype:	Ig Fraction
Purification:	This antibody is purified through a protein A column, followed by peptide affinity purification.

Target Details

Target:	SGSM1
Alternative Name:	SGSM1 (SGSM1 Products)
Background:	The function of this protein remains unknown.

Target Details

Molecular Weight: 129718

NCBI Accession: [NP_001035037](#), [NP_001091967](#), [NP_001091968](#), [NP_597711](#)

UniProt: [Q2NKQ1](#)

Application Details

Application Notes: WB: 1:1000. WB: 1:1000

Restrictions: For Research Use only

Handling

Format: Liquid

Buffer: Purified polyclonal antibody supplied in PBS with 0.09 % (W/V) sodium azide.

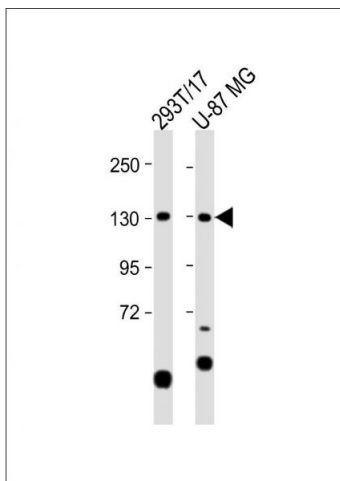
Preservative: Sodium azide

Precaution of Use: This product contains Sodium azide: a POISONOUS AND HAZARDOUS SUBSTANCE which should be handled by trained staff only.

Storage: 4 °C,-20 °C

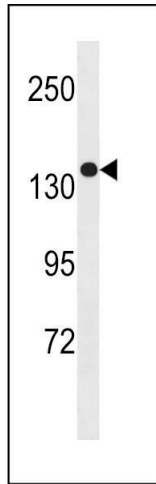
Expiry Date: 6 months

Images



Western Blotting

Image 1. All lanes : Anti-SGSM1 Antibody (Center) at 1:1000 dilution Lane 1: 293T/17 whole cell lysate Lane 2: U-87 MG whole cell lysate Lysates/proteins at 20 µg per lane. Secondary Goat Anti-Rabbit IgG, (H+L), Peroxidase conjugated at 1/10000 dilution. Predicted band size : 130 kDa Blocking/Dilution buffer: 5 % NFDN/TBST.



Western Blotting

Image 2. SGSM1 Antibody (Center) (ABIN1881801 and ABIN2843255) western blot analysis in MDA-M cell line lysates (35 µg/lane). This demonstrates the SGSM1 antibody detected the SGSM1 protein (arrow).