

Datasheet for ABIN1881814
anti-SLC06A1 antibody (C-Term)[Go to Product page](#)

1 Image

Overview

Quantity:	400 µL
Target:	SLC06A1
Binding Specificity:	AA 678-707, C-Term
Reactivity:	Human
Host:	Rabbit
Clonality:	Polyclonal
Conjugate:	This SLC06A1 antibody is un-conjugated
Application:	Western Blotting (WB)

Product Details

Immunogen:	This SLC06A1 antibody is generated from rabbits immunized with a KLH conjugated synthetic peptide between 678-707 amino acids from the C-terminal region of human SLC06A1.
Clone:	RB40482
Isotype:	Ig Fraction
Purification:	This antibody is purified through a protein A column, followed by peptide affinity purification.

Target Details

Target:	SLC06A1
Alternative Name:	SLC06A1 (SLC06A1 Products)
Background:	The function of SLC06A1 (solute carrier organic anion transporter family, member 6A1) is

Target Details

currently unknown.

Molecular Weight: 79232

NCBI Accession: [NP_775759](#)

UniProt: [Q86UG4](#)

Application Details

Application Notes: WB: 1:1000

Restrictions: For Research Use only

Handling

Format: Liquid

Buffer: Purified polyclonal antibody supplied in PBS with 0.09 % (W/V) sodium azide.

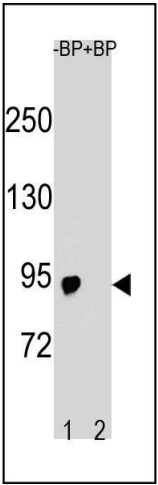
Preservative: Sodium azide

Precaution of Use: This product contains Sodium azide: a POISONOUS AND HAZARDOUS SUBSTANCE which should be handled by trained staff only.

Storage: 4 °C,-20 °C

Expiry Date: 6 months

Images



Western Blotting

Image 1. Western blot analysis of SLC06A1 Antibody (C-term) Pab (ABIN1881814 and ABIN2843228) pre-incubated without (lane 1) and with (lane 2) blocking peptide in cell line lysate. SLC06A1 Antibody (C-term) (arrow) was detected using the purified Pab.