



[Go to Product page](#)

Datasheet for ABIN1881826

anti-SPRY3 antibody (C-Term)

1 Image

Overview

Quantity:	400 µL
Target:	SPRY3
Binding Specificity:	AA 261-288, C-Term
Reactivity:	Human
Host:	Rabbit
Clonality:	Polyclonal
Conjugate:	This SPRY3 antibody is un-conjugated
Application:	Western Blotting (WB)

Product Details

Immunogen:	This SPRY3 antibody is generated from rabbits immunized with a KLH conjugated synthetic peptide between 261-288 amino acids from the C-terminal region of human SPRY3.
Clone:	RB32263
Isotype:	Ig Fraction
Purification:	This antibody is purified through a protein A column, followed by peptide affinity purification.

Target Details

Target:	SPRY3
Alternative Name:	SPRY3 (SPRY3 Products)
Background:	May function as an antagonist of fibroblast growth factor (FGF) pathways and may negatively

Target Details

modulate respiratory organogenesis.

Molecular Weight: 31222

NCBI Accession: [NP_005831](#)

UniProt: [O43610](#)

Application Details

Application Notes: WB: 1:1000

Restrictions: For Research Use only

Handling

Format: Liquid

Buffer: Purified polyclonal antibody supplied in PBS with 0.09 % (W/V) sodium azide.

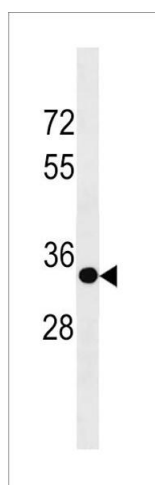
Preservative: Sodium azide

Precaution of Use: This product contains Sodium azide: a POISONOUS AND HAZARDOUS SUBSTANCE which should be handled by trained staff only.

Storage: 4 °C, -20 °C

Expiry Date: 6 months

Images



Western Blotting

Image 1. SPRY3 Antibody (C-term) (ABIN1881826 and ABIN2843208) western blot analysis in 293 cell line lysates (35 µg/lane). This demonstrates the SPRY3 antibody detected the SPRY3 protein (arrow).