

Datasheet for ABIN1881833
anti-Src antibody (N-Term)

6 Images

5 Publications

[Go to Product page](#)

Overview

Quantity:	400 µL
Target:	Src
Binding Specificity:	AA 24-52, N-Term
Reactivity:	Human
Host:	Rabbit
Clonality:	Polyclonal
Conjugate:	This Src antibody is un-conjugated
Application:	Western Blotting (WB), Immunofluorescence (IF), Immunohistochemistry (Paraffin-embedded Sections) (IHC (p)), Flow Cytometry (FACS)

Product Details

Immunogen:	This SRC antibody is generated from rabbits immunized with a KLH conjugated synthetic peptide between 24-52 amino acids from the N-terminal region of human SRC.
Clone:	RB41141
Isotype:	IgG
Predicted Reactivity:	M
Purification:	This antibody is purified through a protein A column, followed by peptide affinity purification.

Target Details

Target:	Src
---------	-----

Target Details

Alternative Name:	SRC (Src Products)
Target Type:	Viral Protein
Background:	This gene is highly similar to the v-src gene of Rous sarcoma virus. This proto-oncogene may play a role in the regulation of embryonic development and cell growth. The protein encoded by this gene is a tyrosine-protein kinase whose activity can be inhibited by phosphorylation by c-SRC kinase. Mutations in this gene could be involved in the malignant progression of colon cancer. Two transcript variants encoding the same protein have been found for this gene.
Molecular Weight:	59835
NCBI Accession:	NP_005408 , NP_938033
UniProt:	P12931
Pathways:	JAK-STAT Signaling , Neurotrophin Signaling Pathway , Intracellular Steroid Hormone Receptor Signaling Pathway , Regulation of Intracellular Steroid Hormone Receptor Signaling , Cellular Response to Molecule of Bacterial Origin , Cell-Cell Junction Organization , Regulation of Carbohydrate Metabolic Process , Autophagy , CXCR4-mediated Signaling Events , Signaling Events mediated by VEGFR1 and VEGFR2 , Smooth Muscle Cell Migration , Negative Regulation of intrinsic apoptotic Signaling , Platelet-derived growth Factor Receptor Signaling , Thromboxane A2 Receptor Signaling , Signaling of Hepatocyte Growth Factor Receptor , VEGF Signaling

Application Details

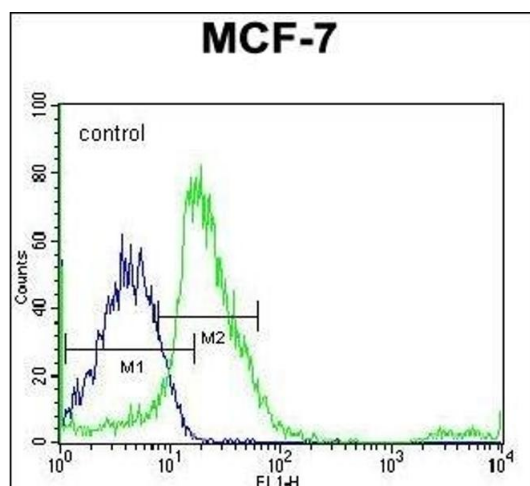
Application Notes:	IF: 1:50. IF: 1:50. WB: 1:2000. IHC-P: 1:50. IHC-P: 1:50. FC: 1:50
Restrictions:	For Research Use only

Handling

Format:	Liquid
Buffer:	Purified polyclonal antibody supplied in PBS with 0.09 % (W/V) sodium azide.
Preservative:	Sodium azide
Precaution of Use:	This product contains Sodium azide: a POISONOUS AND HAZARDOUS SUBSTANCE which should be handled by trained staff only.
Storage:	4 °C,-20 °C
Expiry Date:	6 months

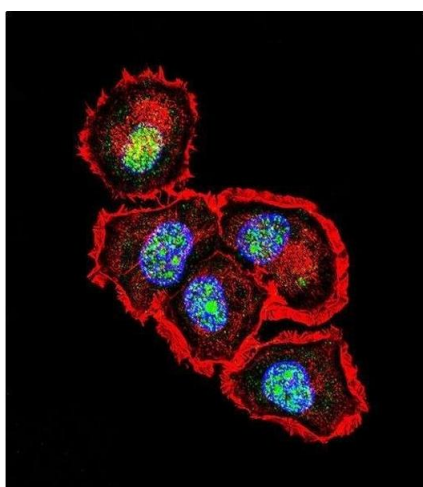
- Product cited in: Wendeler, Pabst, Wang, Strouse, Wang, Hunter: "Process-scale purification and analytical characterization of highly gamma-carboxylated recombinant human prothrombin." in: **Journal of chromatography. A**, Vol. 1325, pp. 171-8, (2014) ([PubMed](#)).
- Yang, Ko, Yang, Kim, Seo, Park, Choi, Seong, Kweon: "Interleukin-1 promotes coagulation, which is necessary for protective immunity in the lung against Streptococcus pneumoniae infection." in: **The Journal of infectious diseases**, Vol. 207, Issue 1, pp. 50-60, (2012) ([PubMed](#)).
- Lim, Joy, Hill, San Brian Chia: "Novel agmatine and agmatine-like peptidomimetic inhibitors of the West Nile virus NS2B/NS3 serine protease." in: **European journal of medicinal chemistry**, Vol. 46, Issue 7, pp. 3130-4, (2011) ([PubMed](#)).

Images



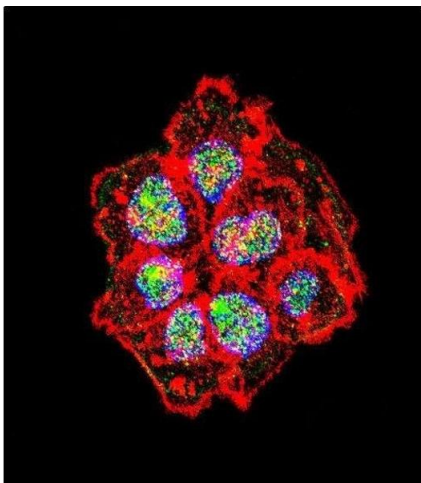
Flow Cytometry

Image 1. SRC Antibody (N-term) flow cytometric analysis of MCF-7 cells (right histogram) compared to a negative control cell (left histogram). Alexa Fluor 488-conjugated donkey anti-rabbit IgG secondary antibodies were used for the analysis.



Immunofluorescence

Image 2. Confocal immunofluorescent analysis of SRC Antibody (N-term) with MCF-7 cell followed by Alexa Fluor 488-conjugated goat anti-rabbit IgG (green). Actin filaments have been labeled with Alexa Fluor 555 phalloidin (red). DAPI was used to stain the cell nuclear (blue).



Immunofluorescence

Image 3. Confocal immunofluorescent analysis of SRC Antibody (N-term) with A431 cell followed by Alexa Fluor 488-conjugated goat anti-rabbit IgG (green). Actin filaments have been labeled with Alexa Fluor 555 phalloidin (red). DAPI was used to stain the cell nuclear (blue).

Please check the [product details page](#) for more images. Overall 6 images are available for ABIN1881833.