

Datasheet for ABIN1881838  
**anti-SSX6 antibody (AA 62-91)**[Go to Product page](#)

## 1 Image

## Overview

Quantity:	400 µL
Target:	SSX6
Binding Specificity:	AA 62-91
Reactivity:	Human
Host:	Rabbit
Clonality:	Polyclonal
Conjugate:	This SSX6 antibody is un-conjugated
Application:	Western Blotting (WB)

## Product Details

Immunogen:	This SSX6 antibody is generated from rabbits immunized with a KLH conjugated synthetic peptide between 62-91 amino acids from the Central region of human SSX6.
Clone:	RB41620
Isotype:	Ig Fraction
Purification:	This antibody is purified through a protein A column, followed by peptide affinity purification.

## Target Details

Target:	SSX6
Alternative Name:	SSX6 ( <a href="#">SSX6 Products</a> )
Background:	Could act as a modulator of transcription.

## Target Details

Molecular Weight: 21688

UniProt: [Q7RTT6](#)

## Application Details

Application Notes: WB: 1:1000

Restrictions: For Research Use only

## Handling

Format: Liquid

Buffer: Purified polyclonal antibody supplied in PBS with 0.09 % (W/V) sodium azide.

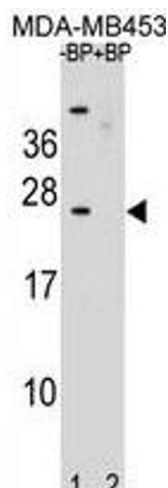
Preservative: Sodium azide

Precaution of Use: This product contains Sodium azide: a POISONOUS AND HAZARDOUS SUBSTANCE which should be handled by trained staff only.

Storage: 4 °C, -20 °C

Expiry Date: 6 months

## Images



### Western Blotting

**Image 1.** Western blot analysis of SSX6 Antibody (Center) Pab (ABIN1881838 and ABIN2839021) pre-incubated without (lane 1) and with (lane 2) blocking peptide in MDA-M cell line lysate. SSX6 Antibody (Center) (arrow) was detected using the purified Pab.