

Datasheet for ABIN1881860
anti-SYN1 antibody (C-Term)



[Go to Product page](#)

2 Images

Overview

Quantity:	400 µL
Target:	SYN1
Binding Specificity:	AA 668-697, C-Term
Reactivity:	Human
Host:	Rabbit
Clonality:	Polyclonal
Conjugate:	This SYN1 antibody is un-conjugated
Application:	Western Blotting (WB)

Product Details

Immunogen:	This SYN1 antibody is generated from rabbits immunized with a KLH conjugated synthetic peptide between 668-697 amino acids from the C-terminal region of human SYN1.
Clone:	RB43634
Isotype:	Ig Fraction
Predicted Reactivity:	B, M, Rat
Purification:	This antibody is purified through a protein A column, followed by peptide affinity purification.

Target Details

Target:	SYN1
Alternative Name:	SYN1 (SYN1 Products)

Target Details

Background:	Neuronal phosphoprotein that coats synaptic vesicles, binds to the cytoskeleton, and is believed to function in the regulation of neurotransmitter release. The complex formed with NOS1 and CAPON proteins is necessary for specific nitric-oxid functions at a presynaptic level.
Molecular Weight:	74111
NCBI Accession:	NP_008881 , NP_598006
UniProt:	P17600

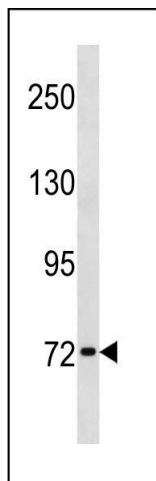
Application Details

Application Notes:	WB: 1:1000. WB: 1:1000
Restrictions:	For Research Use only

Handling

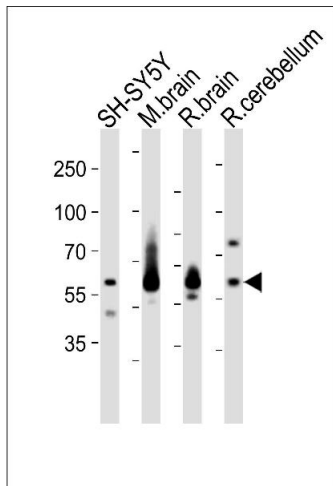
Format:	Liquid
Buffer:	Purified polyclonal antibody supplied in PBS with 0.09 % (W/V) sodium azide.
Preservative:	Sodium azide
Precaution of Use:	This product contains Sodium azide: a POISONOUS AND HAZARDOUS SUBSTANCE which should be handled by trained staff only.
Storage:	4 °C,-20 °C
Expiry Date:	6 months

Images



Western Blotting

Image 1. SYN1 Antibody (C-term) (ABIN1881860 and ABIN2843335) western blot analysis in HL-60 cell line lysates (35 µg/lane). This demonstrates the SYN1 antibody detected the SYN1 protein (arrow).



Western Blotting

Image 2. Western blot analysis of lysates from SH-SY5Y cell line, mouse brain, rat brain, rat cerebellum tissue (from left to right), using SYN1 Antibody (C-term) (ABIN1881860 and ABIN2843335). (ABIN1881860 and ABIN2843335) was diluted at 1:1000 at each lane. A goat anti-rabbit IgG H&L(HRP) at 1:10000 dilution was used as the secondary antibody. Lysates at 20 µg per lane.