

Datasheet for ABIN1881870  
**anti-TAS2R43 antibody (AA 135-163)**[Go to Product page](#)

## 1 Image

## Overview

Quantity:	400 µL
Target:	TAS2R43
Binding Specificity:	AA 135-163
Reactivity:	Human
Host:	Rabbit
Clonality:	Polyclonal
Conjugate:	This TAS2R43 antibody is un-conjugated
Application:	Western Blotting (WB)

## Product Details

Immunogen:	This TAS2R43 antibody is generated from rabbits immunized with a KLH conjugated synthetic peptide between 135-163 amino acids from the Central region of human TAS2R43.
Clone:	RB42224
Isotype:	Ig Fraction
Purification:	This antibody is purified through a protein A column, followed by peptide affinity purification.

## Target Details

Target:	TAS2R43
Alternative Name:	TAS2R43 ( <a href="#">TAS2R43 Products</a> )
Background:	Gustducin-coupled receptor implicated in the perception of bitter compounds in the oral

## Target Details

cavity and the gastrointestinal tract. Signals through PLCB2 and the calcium-regulated cation channel TRPM5. Activated by the sulfonyl amide sweeteners saccharin and acesulfame K. In airway epithelial cells, binding of bitter compounds increases the intracellular calcium ion concentration and stimulates ciliary beat frequency. May acts as chemosensory receptors in airway epithelial cells to detect and eliminate potential noxious agents from the airways (By similarity).

Molecular Weight: 35599

NCBI Accession: [NP\\_795365](#)

UniProt: [P59537](#)

## Application Details

Application Notes: WB: 1:1000

Restrictions: For Research Use only

## Handling

Format: Liquid

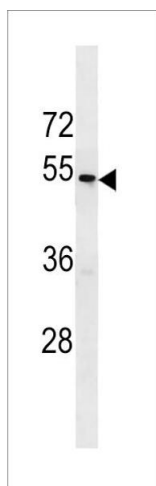
Buffer: Purified polyclonal antibody supplied in PBS with 0.09 % (W/V) sodium azide.

Preservative: Sodium azide

Precaution of Use: This product contains Sodium azide: a POISONOUS AND HAZARDOUS SUBSTANCE which should be handled by trained staff only.

Storage: 4 °C,-20 °C

Expiry Date: 6 months



#### Western Blotting

**Image 1.** TAS2R43 Antibody (Center) (ABIN1881870 and ABIN2843241) western blot analysis in T47D cell line lysates (35 µg/lane). This demonstrates the TAS2R43 antibody detected the TAS2R43 protein (arrow).