



[Go to Product page](#)

Datasheet for ABIN1881878

## anti-TFEC antibody (AA 179-205)

1 Image

3 Publications

### Overview

Quantity:	400 µL
Target:	TFEC
Binding Specificity:	AA 179-205
Reactivity:	Human
Host:	Rabbit
Clonality:	Polyclonal
Application:	Western Blotting (WB)

### Product Details

Immunogen:	This TFEC antibody is generated from rabbits immunized with a KLH conjugated synthetic peptide between 179-205 amino acids from the Central region of human TFEC.
Clone:	RB40605
Isotype:	Ig Fraction
Predicted Reactivity:	C, M, Rat
Purification:	This antibody is purified through a protein A column, followed by peptide affinity purification.

### Target Details

Target:	TFEC
Alternative Name:	TFEC ( <a href="#">TFEC Products</a> )
Background:	Transcriptional regulator that acts as a repressor or an activator. Acts as a transcriptional

## Target Details

---

repressor on minimal promoter containing element F (that includes an E-box sequence). Binds to element F in an E-box sequence-specific manner. Acts as a transcriptional transactivator on the proximal promoter region of the tartrate-resistant acid phosphatase (TRAP) E-box containing promoter (By similarity). Collaborates with MITF in target gene activation (By similarity). Acts as a transcriptional repressor on minimal promoter containing mu E3 enhancer sequence (By similarity). Binds to mu E3 DNA sequence of the immunoglobulin heavy-chain gene enhancer (By similarity). Binds DNA in a homo-or heterodimeric form.

Molecular Weight: 38788

NCBI Accession: [NP\\_001018068](#), [NP\\_001231512](#), [NP\\_036384](#)

UniProt: [O14948](#)

## Application Details

---

Application Notes: WB: 1:1000

Restrictions: For Research Use only

## Handling

---

Format: Liquid

Buffer: Purified polyclonal antibody supplied in PBS with 0.09 % (W/V) sodium azide.

Preservative: Sodium azide

Precaution of Use: This product contains Sodium azide: a POISONOUS AND HAZARDOUS SUBSTANCE which should be handled by trained staff only.

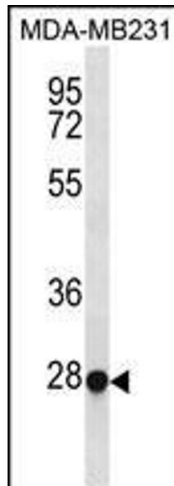
Storage: 4 °C,-20 °C

Expiry Date: 6 months

## Publications

---

Product cited in: Mei, Li, Chu, Yiu, Lo: "The inhibitory effects of silver diamine fluoride at different concentrations on matrix metalloproteinases." in: **Dental materials : official publication of the Academy of Dental Materials**, Vol. 28, Issue 8, pp. 903-8, (2012) ([PubMed](#)).



### Western Blotting

**Image 1.** TFEC Antibody (Center) (ABIN1881878 and ABIN2838435) western blot analysis in MDA-M cell line lysates (35 µg/lane). This demonstrates the TFEC antibody detected the TFEC protein (arrow).