

Datasheet for ABIN1881900
anti-TRAF6 antibody (AA 314-343)[Go to Product page](#)**1** Image**5** Publications

Overview

Quantity:	400 µL
Target:	TRAF6
Binding Specificity:	AA 314-343
Reactivity:	Human
Host:	Rabbit
Clonality:	Polyclonal
Conjugate:	This TRAF6 antibody is un-conjugated
Application:	Western Blotting (WB)

Product Details

Immunogen:	This TRAF6 antibody is generated from rabbits immunized with a KLH conjugated synthetic peptide between 314-343 amino acids from the Central region of human TRAF6.
Clone:	RB40708
Isotype:	Ig Fraction
Predicted Reactivity:	B, M
Purification:	This antibody is purified through a protein A column, followed by peptide affinity purification.

Target Details

Target:	TRAF6
Alternative Name:	TRAF6 (TRAF6 Products)

Target Details

Background:	The protein encoded by this gene is a member of the TNF receptor associated factor (TRAF) protein family. TRAF proteins are associated with, and mediate signal transduction from members of the TNF receptor superfamily. This protein mediates the signaling not only from the members of the TNF receptor superfamily, but also from the members of the Toll/IL-1 family. Signals from receptors such as CD40, TNFSF11/RANCE and IL-1 have been shown to be mediated by this protein. This protein also interacts with various protein kinases including IRAK1/IRAK, SRC and PKCzeta, which provides a link between distinct signaling pathways. This protein functions as a signal transducer in the NF-kappaB pathway that activates I kappa B kinase (IKK) in response to proinflammatory cytokines. The interaction of this protein with UBE2N/UBC13, and UBE2V1/UEV1A, which are ubiquitin conjugating enzymes catalyzing the formation of polyubiquitin chains, has been found to be required for IKK activation by this protein. Two alternatively spliced transcript variants encoding identical proteins have been reported. [provided by RefSeq].
Molecular Weight:	59573
NCBI Accession:	NP_004611 , NP_665802
UniProt:	Q9Y4K3
Pathways:	NF-kappaB Signaling , TCR Signaling , TLR Signaling , Fc-epsilon Receptor Signaling Pathway , Neurotrophin Signaling Pathway , Activation of Innate immune Response , Regulation of Leukocyte Mediated Immunity , Positive Regulation of Immune Effector Process , Production of Molecular Mediator of Immune Response , Tube Formation , Hepatitis C , Toll-Like Receptors Cascades , Ubiquitin Proteasome Pathway

Application Details

Application Notes:	WB: 1:1000
Restrictions:	For Research Use only

Handling

Format:	Liquid
Buffer:	Purified polyclonal antibody supplied in PBS with 0.09 % (W/V) sodium azide.
Preservative:	Sodium azide
Precaution of Use:	This product contains Sodium azide: a POISONOUS AND HAZARDOUS SUBSTANCE which should be handled by trained staff only.

Handling

Storage: 4 °C, -20 °C

Expiry Date: 6 months

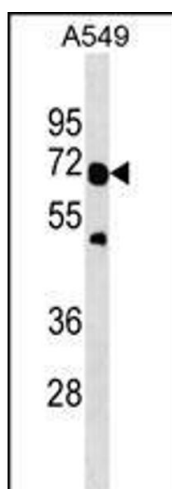
Publications

Product cited in: Wendeler, Pabst, Wang, Strouse, Wang, Hunter: "Process-scale purification and analytical characterization of highly gamma-carboxylated recombinant human prothrombin." in: **Journal of chromatography. A**, Vol. 1325, pp. 171-8, (2014) ([PubMed](#)).

Yang, Ko, Yang, Kim, Seo, Park, Choi, Seong, Kweon: "Interleukin-1 promotes coagulation, which is necessary for protective immunity in the lung against Streptococcus pneumoniae infection." in: **The Journal of infectious diseases**, Vol. 207, Issue 1, pp. 50-60, (2012) ([PubMed](#)).

Lim, Joy, Hill, San Brian Chia: "Novel agmatine and agmatine-like peptidomimetic inhibitors of the West Nile virus NS2B/NS3 serine protease." in: **European journal of medicinal chemistry**, Vol. 46, Issue 7, pp. 3130-4, (2011) ([PubMed](#)).

Images



Western Blotting

Image 1. TRAF6 Antibody (Center) (ABIN1881900 and ABIN2838629) western blot analysis in A549 cell line lysates (35 µg/lane). This demonstrates the TRAF6 antibody detected the TRAF6 protein (arrow).