



[Go to Product page](#)

Datasheet for ABIN1881915
anti-TSC1 antibody (pSer561)

1 Image

2 Publications

Overview

Quantity: 400 µL

Target: TSC1

Binding Specificity: pSer561

Reactivity: Mouse

Host: Rabbit

Clonality: Polyclonal

Application: Dot Blot (DB)

Product Details

Immunogen: This mouse TSC1 Antibody is generated from rabbits immunized with a KLH conjugated synthetic phosphopeptide corresponding to amino acid residues surrounding S561 of mouse TSC1.

Clone: RB41237

Isotype: Ig Fraction

Purification: This antibody is purified through a protein A column, followed by peptide affinity purification.

Target Details

Target: TSC1

Alternative Name: TSC1 ([TSC1 Products](#))

Background: In complex with TSC2, inhibits the nutrient-mediated or growth factor-stimulated phosphorylation of S6K1 and EIF4EBP1 by negatively regulating mTORC1 signaling (By

Target Details

similarity). Implicated as a tumor suppressor. Involved in microtubule-mediated protein transport, but this seems to be due to unregulated mTOR signaling (By similarity).

Molecular Weight: 128746

NCBI Accession: [NP_075025](#)

UniProt: [Q9EP53](#)

Pathways: [RTK Signaling](#), [AMPK Signaling](#), [Regulation of Cell Size](#), [Tube Formation](#)

Application Details

Application Notes: DB: 1:500

Restrictions: For Research Use only

Handling

Format: Liquid

Buffer: Purified polyclonal antibody supplied in PBS with 0.09 % (W/V) sodium azide.

Preservative: Sodium azide

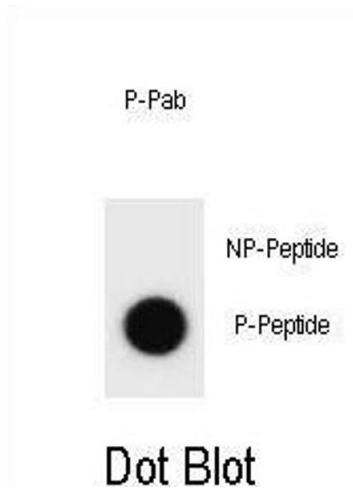
Precaution of Use: This product contains Sodium azide: a POISONOUS AND HAZARDOUS SUBSTANCE which should be handled by trained staff only.

Storage: 4 °C,-20 °C

Expiry Date: 6 months

Publications

Product cited in: Mei, Li, Chu, Yiu, Lo: "The inhibitory effects of silver diamine fluoride at different concentrations on matrix metalloproteinases." in: **Dental materials : official publication of the Academy of Dental Materials**, Vol. 28, Issue 8, pp. 903-8, (2012) ([PubMed](#)).



Dot Blot

Image 1. Dot blot analysis of mouse TSC1 Antibody (Phospho) Phospho-specific Pab (ABIN1881915 and ABIN2839926) on nitrocellulose membrane. 50 ng of Phospho-peptide or Non Phospho-peptide per dot were adsorbed. Antibody working concentrations are 0.6 µg per ml.