

Datasheet for ABIN1881916
anti-TSC1 antibody (pSer591)



[Go to Product page](#)

1 Image **2** Publications

Overview

Quantity:	400 µL
Target:	TSC1
Binding Specificity:	pSer591
Reactivity:	Mouse
Host:	Rabbit
Clonality:	Polyclonal
Application:	Dot Blot (DB)

Product Details

Immunogen:	This mouse TSC1 Antibody is generated from rabbits immunized with a KLH conjugated synthetic phosphopeptide corresponding to amino acid residues surrounding S591 of mouse TSC1.
Clone:	RB41240
Isotype:	Ig Fraction
Predicted Reactivity:	Rat
Purification:	This antibody is purified through a protein A column, followed by peptide affinity purification.

Target Details

Target:	TSC1
Alternative Name:	TSC1 (TSC1 Products)

Target Details

Background:	In complex with TSC2, inhibits the nutrient-mediated or growth factor-stimulated phosphorylation of S6K1 and EIF4EBP1 by negatively regulating mTORC1 signaling (By similarity). Implicated as a tumor suppressor. Involved in microtubule-mediated protein transport, but this seems to be due to unregulated mTOR signaling (By similarity).
Molecular Weight:	128746
NCBI Accession:	NP_075025
UniProt:	Q9EP53
Pathways:	RTK Signaling , AMPK Signaling , Regulation of Cell Size , Tube Formation

Application Details

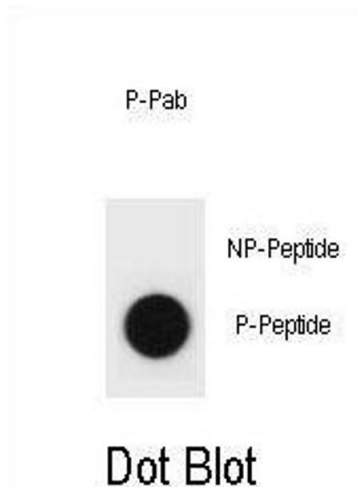
Application Notes:	DB: 1:500
Restrictions:	For Research Use only

Handling

Format:	Liquid
Buffer:	Purified polyclonal antibody supplied in PBS with 0.09 % (W/V) sodium azide.
Preservative:	Sodium azide
Precaution of Use:	This product contains Sodium azide: a POISONOUS AND HAZARDOUS SUBSTANCE which should be handled by trained staff only.
Storage:	4 °C,-20 °C
Expiry Date:	6 months

Publications

Product cited in:	<p>Akpa, Oyejola: "Modeling the transmission dynamics of HIV/AIDS epidemics: an introduction and a review." in: Journal of infection in developing countries, Vol. 4, Issue 10, pp. 597-608, (2010) (PubMed).</p> <p>Kladney, Cardiff, Kwiatkowski, Chiang, Weber, Arbeit, Lu: "Tuberous sclerosis complex 1: an epithelial tumor suppressor essential to prevent spontaneous prostate cancer in aged mice." in: Cancer research, Vol. 70, Issue 21, pp. 8937-47, (2010) (PubMed).</p>
-------------------	--



Dot Blot

Image 1. Dot blot analysis of mouse TSC1 Antibody (Phospho) Phospho-specific Pab (ABIN1881916 and ABIN2839927) on nitrocellulose membrane. 50 ng of Phospho-peptide or Non Phospho-peptide per dot were adsorbed. Antibody working concentrations are 0.6 µg per ml.