

Datasheet for ABIN1881927
anti-TSC1 antibody (pSer682)



[Go to Product page](#)

1 Image **5** Publications

Overview

Quantity:	400 µL
Target:	TSC1
Binding Specificity:	pSer682
Reactivity:	Human
Host:	Rabbit
Clonality:	Polyclonal
Application:	Dot Blot (DB)

Product Details

Immunogen:	This TSC1 Antibody is generated from rabbits immunized with a KLH conjugated synthetic phosphopeptide corresponding to amino acid residues surrounding S682 of human TSC1.
Clone:	RB41325
Isotype:	Ig Fraction
Predicted Reactivity:	Rat
Purification:	This antibody is purified through a protein A column, followed by peptide affinity purification.

Target Details

Target:	TSC1
Alternative Name:	TSC1 (TSC1 Products)
Background:	This gene encodes a growth inhibitory protein thought to play a role in the stabilization of

Target Details

tuberin. Mutations in this gene have been associated with tuberous sclerosis. Alternative splicing results in multiple transcript variants.

Molecular Weight: 129767

NCBI Accession: [NP_000359](#), [NP_001155898](#), [NP_001155899](#)

UniProt: [Q92574](#)

Pathways: [RTK Signaling](#), [AMPK Signaling](#), [Regulation of Cell Size](#), [Tube Formation](#)

Application Details

Application Notes: DB: 1:500

Restrictions: For Research Use only

Handling

Format: Liquid

Buffer: Purified polyclonal antibody supplied in PBS with 0.09 % (W/V) sodium azide.

Preservative: Sodium azide

Precaution of Use: This product contains Sodium azide: a POISONOUS AND HAZARDOUS SUBSTANCE which should be handled by trained staff only.

Storage: 4 °C, -20 °C

Expiry Date: 6 months

Publications

Product cited in: Mehta, Vazquez, Kulkarni, Kerrigan, Atwal, Metsugi, Toppmeyer, Levine, Hirshfield: "Polymorphic variants in TSC1 and TSC2 and their association with breast cancer phenotypes." in: **Breast cancer research and treatment**, Vol. 125, Issue 3, pp. 861-8, (2011) ([PubMed](#)).

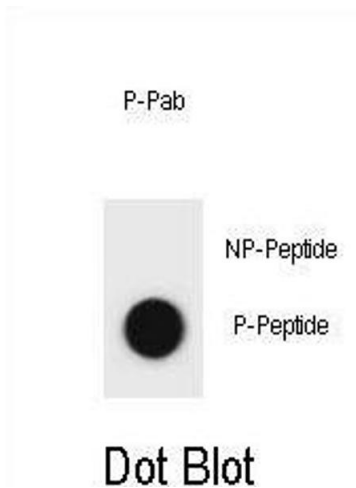
Hoogeveen-Westerveld, Exalto, Maat-Kievit, van den Ouweland, Halley, Nellist: "Analysis of TSC1 truncations defines regions involved in TSC1 stability, aggregation and interaction." in: **Biochimica et biophysica acta**, Vol. 1802, Issue 9, pp. 774-81, (2010) ([PubMed](#)).

Mieulet, Lamb: "Tuberous sclerosis complex: linking cancer to metabolism." in: **Trends in molecular medicine**, Vol. 16, Issue 7, pp. 329-35, (2010) ([PubMed](#)).

Guo, Ying, Zhang, Yuan, Qian, Wang, Yang, He: "Tandem affinity purification and identification of the human TSC1 protein complex." in: **Acta biochimica et biophysica Sinica**, Vol. 42, Issue 4, pp. 266-73, (2010) ([PubMed](#)).

Liu, Wu, Chen, Ter-Minassian, Asomaning, Zhai, Wang, Su, Heist, Kulke, Lin, Liu, Christiani: "A Large-scale genetic association study of esophageal adenocarcinoma risk." in: **Carcinogenesis**, Vol. 31, Issue 7, pp. 1259-63, (2010) ([PubMed](#)).

Images



Dot Blot

Image 1. Dot blot analysis of TSC1 Antibody (Phospho) Phospho-specific Pab (ABIN1881927 and ABIN2839962) on nitrocellulose membrane. 50 ng of Phospho-peptide or Non Phospho-peptide per dot were adsorbed. Antibody working concentrations are 0.6 µg per ml.