

Datasheet for ABIN1881930
anti-TSC1 antibody (pThr390)[Go to Product page](#)**1** Image**5** Publications

Overview

Quantity:	400 µL
Target:	TSC1
Binding Specificity:	pThr390
Reactivity:	Human
Host:	Rabbit
Clonality:	Polyclonal
Application:	Dot Blot (DB)

Product Details

Immunogen:	This TSC1 Antibody is generated from rabbits immunized with a KLH conjugated synthetic phosphopeptide corresponding to amino acid residues surrounding T390 of human TSC1.
Clone:	RB42202
Isotype:	Ig Fraction
Purification:	This antibody is purified through a protein A column, followed by peptide affinity purification.

Target Details

Target:	TSC1
Alternative Name:	TSC1 (TSC1 Products)
Background:	This gene encodes a growth inhibitory protein thought to play a role in the stabilization of tuberin. Mutations in this gene have been associated with tuberous sclerosis. Alternative splicing results in multiple transcript variants.

Target Details

Molecular Weight:	129767
NCBI Accession:	NP_000359 , NP_001155898 , NP_001155899
UniProt:	Q92574
Pathways:	RTK Signaling , AMPK Signaling , Regulation of Cell Size , Tube Formation

Application Details

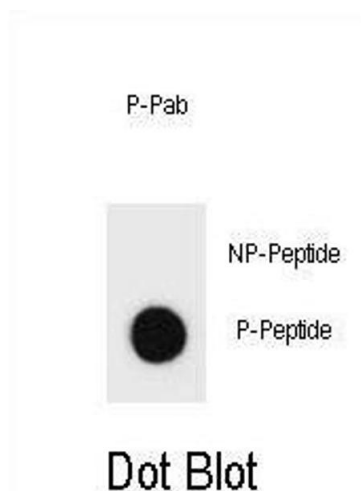
Application Notes:	DB: 1:500
Restrictions:	For Research Use only

Handling

Format:	Liquid
Buffer:	Purified polyclonal antibody supplied in PBS with 0.09 % (W/V) sodium azide.
Preservative:	Sodium azide
Precaution of Use:	This product contains Sodium azide: a POISONOUS AND HAZARDOUS SUBSTANCE which should be handled by trained staff only.
Storage:	4 °C, -20 °C
Expiry Date:	6 months

Publications

Product cited in:	<p>Zampagni, Cascella, Casamenti, Grossi, Evangelisti, Wright, Becatti, Liguri, Mannini, Campioni, Chiti, Cecchi: "A comparison of the biochemical modifications caused by toxic and non-toxic protein oligomers in cells." in: Journal of cellular and molecular medicine, Vol. 15, Issue 10, pp. 2106-16, (2011) (PubMed).</p> <p>Liao, Lasbury, Wang, Zhang, Durant, Murakami, Matsufuji, Lee: "Pneumocystis mediates overexpression of antizyme inhibitor resulting in increased polyamine levels and apoptosis in alveolar macrophages." in: The Journal of biological chemistry, Vol. 284, Issue 12, pp. 8174-84, (2009) (PubMed).</p>
-------------------	--



Dot Blot

Image 1. Dot blot analysis of TSC1 Antibody (Phospho) Phospho-specific Pab (ABIN1881930 and ABIN2839980) on nitrocellulose membrane. 50 ng of Phospho-peptide or Non Phospho-peptide per dot were adsorbed. Antibody working concentrations are 0.6 µg per ml.