



[Go to Product page](#)

Datasheet for ABIN1881966

anti-UBE2L3 antibody (C-Term)

2 Images

5 Publications

Overview

Quantity:	400 µL
Target:	UBE2L3
Binding Specificity:	AA 106-135, C-Term
Reactivity:	Human, Mouse, Rat
Host:	Rabbit
Clonality:	Polyclonal
Conjugate:	This UBE2L3 antibody is un-conjugated
Application:	Western Blotting (WB), Immunohistochemistry (Paraffin-embedded Sections) (IHC (p))

Product Details

Immunogen:	This UBE2L3 antibody is generated from rabbits immunized with a KLH conjugated synthetic peptide between 106-135 amino acids from the C-terminal region of human UBE2L3.
Clone:	RB41666
Isotype:	Ig Fraction
Predicted Reactivity:	B
Purification:	This antibody is purified through a protein A column, followed by peptide affinity purification.

Target Details

Target:	UBE2L3
Alternative Name:	UBE2L3 (UBE2L3 Products)

Target Details

Background: The modification of proteins with ubiquitin is an important cellular mechanism for targeting abnormal or short-lived proteins for degradation. Ubiquitination involves at least three classes of enzymes: ubiquitin-activating enzymes (E1s), ubiquitin-conjugating enzymes (E2s) and ubiquitin-protein ligases (E3s). This gene encodes a member of the E2 ubiquitin-conjugating enzyme family. This enzyme is demonstrated to participate in the ubiquitination of p53, c-Fos, and the NF- κ B precursor p105 in vitro. Several alternatively spliced transcript variants have been found for this gene.

Molecular Weight: 17862

NCBI Accession: [NP_001243284](#), [NP_001243285](#), [NP_003338](#)

UniProt: [P68036](#)

Application Details

Application Notes: WB: 1:1000. IHC-P: 1:25

Restrictions: For Research Use only

Handling

Format: Liquid

Buffer: Purified polyclonal antibody supplied in PBS with 0.09 % (W/V) sodium azide.

Preservative: Sodium azide

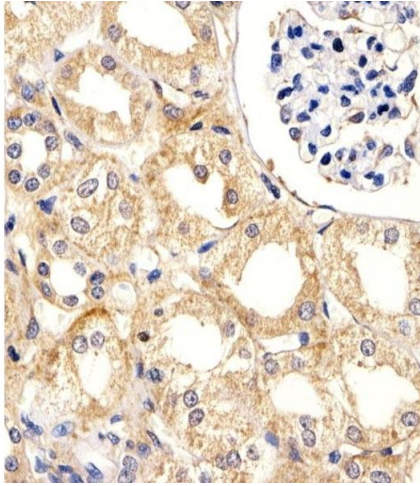
Precaution of Use: This product contains Sodium azide: a POISONOUS AND HAZARDOUS SUBSTANCE which should be handled by trained staff only.

Storage: 4 °C,-20 °C

Expiry Date: 6 months

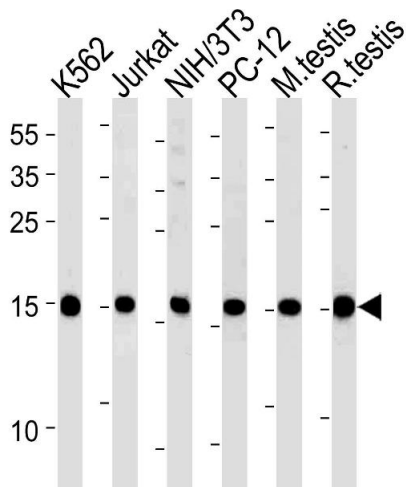
Publications

Product cited in: Hirakawa, Nakayama, Shibata, Sekine: "Association of cellular localization of glycogen synthase kinase 3beta in the digestive tract with cancer development." in: **Oncology reports**, Vol. 22, Issue 3, pp. 481-5, (2009) ([PubMed](#)).



Immunohistochemistry (Paraffin-embedded Sections)

Image 1. Immunohistochemical analysis of paraffin-embedded H.kidney section using UBE2L3 Antibody (C-term) (ABIN1881966 and ABIN2838851). (ABIN1881966 and ABIN2838851) was diluted at 1:25 dilution. A peroxidase-conjugated goat anti-rabbit IgG at 1:400 dilution was used as the secondary antibody, followed by DAB staining.



Western Blotting

Image 2. UBE2L3 Antibody (C-term) (ABIN1881966 and ABIN2838851) western blot analysis in K562,U87-MG,mouse NIH/3T3,rat PC-12 cell line and mouse testis,rat testis tissue lysates (35 µg/lane).This demonstrates the UBE2L3 antibody detected the UBE2L3 protein (arrow).