

Datasheet for ABIN1881997
anti-WASP antibody (AA 205-234)[Go to Product page](#)**1** Image**3** Publications

Overview

Quantity:	400 µL
Target:	WASP (WAS)
Binding Specificity:	AA 205-234
Reactivity:	Human
Host:	Rabbit
Clonality:	Polyclonal
Application:	Western Blotting (WB)

Product Details

Immunogen:	This WAS antibody is generated from rabbits immunized with a KLH conjugated synthetic peptide between 205-234 amino acids from the Central region of human WAS.
Clone:	RB40707
Isotype:	Ig Fraction
Purification:	This antibody is purified through a protein A column, followed by peptide affinity purification.

Target Details

Target:	WASP (WAS)
Alternative Name:	WAS (WAS Products)
Background:	<p>The Wiskott-Aldrich syndrome (WAS) family of proteins share similar domain structure, and are involved in transduction of signals from receptors on the cell surface to the actin cytoskeleton.</p> <p>The presence of a number of different motifs suggests that they are regulated by a number of</p>

Target Details

different stimuli, and interact with multiple proteins. Recent studies have demonstrated that these proteins, directly or indirectly, associate with the small GTPase, Cdc42, known to regulate formation of actin filaments, and the cytoskeletal organizing complex, Arp2/3. Wiskott-Aldrich syndrome is a rare, inherited, X-linked, recessive disease characterized by immune dysregulation and microthrombocytopenia, and is caused by mutations in the WAS gene. The WAS gene product is a cytoplasmic protein, expressed exclusively in hematopoietic cells, which show signalling and cytoskeletal abnormalities in WAS patients. A transcript variant arising as a result of alternative promoter usage, and containing a different 5' UTR sequence, has been described, however, its full-length nature is not known.

Molecular Weight:	52913
-------------------	-------

NCBI Accession:	NP_000368
-----------------	---------------------------

UniProt:	P42768
----------	------------------------

Application Details

Application Notes:	WB: 1:1000
--------------------	------------

Restrictions:	For Research Use only
---------------	-----------------------

Handling

Format:	Liquid
---------	--------

Buffer:	Purified polyclonal antibody supplied in PBS with 0.09 % (W/V) sodium azide.
---------	--

Preservative:	Sodium azide
---------------	--------------

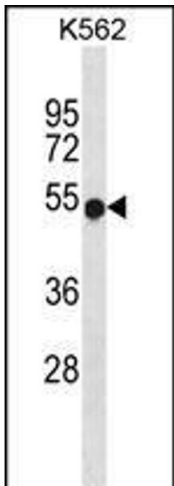
Precaution of Use:	This product contains Sodium azide: a POISONOUS AND HAZARDOUS SUBSTANCE which should be handled by trained staff only.
--------------------	--

Storage:	4 °C,-20 °C
----------	-------------

Expiry Date:	6 months
--------------	----------

Publications

Product cited in:	Mei, Li, Chu, Yiu, Lo: "The inhibitory effects of silver diamine fluoride at different concentrations on matrix metalloproteinases." in: Dental materials : official publication of the Academy of Dental Materials , Vol. 28, Issue 8, pp. 903-8, (2012) (PubMed).
-------------------	--



Western Blotting

Image 1. WAS Antibody (Center) (ABIN1881997 and ABIN2838628) western blot analysis in K562 cell line lysates (35 µg/lane). This demonstrates the WAS antibody detected the WAS protein (arrow).