



[Go to Product page](#)

Datasheet for ABIN1881999

anti-DCAF4 antibody (N-Term)

1 Image

2 Publications

Overview

Quantity:	400 µL
Target:	DCAF4
Binding Specificity:	AA 8-36, N-Term
Reactivity:	Human
Host:	Rabbit
Clonality:	Polyclonal
Conjugate:	This DCAF4 antibody is un-conjugated
Application:	Western Blotting (WB)

Product Details

Immunogen:	This WDR21A antibody is generated from rabbits immunized with a KLH conjugated synthetic peptide between 8-36 amino acids from the N-terminal region of human WDR21A.
Clone:	RB27754
Isotype:	Ig Fraction
Purification:	This antibody is purified through a protein A column, followed by peptide affinity purification.

Target Details

Target:	DCAF4
Alternative Name:	WDR21A (DCAF4 Products)
Background:	This gene encodes a WD repeat-containing protein that interacts with the Cul4-Ddb1 E3 ligase

Target Details

macromolecular complex. Multiple alternatively spliced transcript variants have been found for this gene.

Molecular Weight: 55694

NCBI Accession: [NP_001156980](#), [NP_001156981](#), [NP_056419](#), [NP_851937](#), [NP_851938](#)

UniProt: [Q8WV16](#)

Application Details

Application Notes: WB: 1:1000

Restrictions: For Research Use only

Handling

Format: Liquid

Buffer: Purified polyclonal antibody supplied in PBS with 0.09 % (W/V) sodium azide.

Preservative: Sodium azide

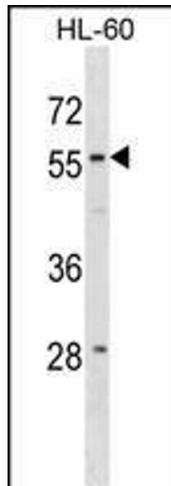
Precaution of Use: This product contains Sodium azide: a POISONOUS AND HAZARDOUS SUBSTANCE which should be handled by trained staff only.

Storage: 4 °C,-20 °C

Expiry Date: 6 months

Publications

Product cited in: Mishra, Chandravanshi, Trigun, Krishnamurthy: "Ambroxol modulates 6-Hydroxydopamine-induced temporal reduction in Glucocerebrosidase (GCase) enzymatic activity and Parkinson's disease symptoms." in: **Biochemical pharmacology**, Vol. 155, pp. 479-493, (2019) ([PubMed](#)).



Western Blotting

Image 1. WDR21A Antibody (N-term) (ABIN1881999 and ABIN2838992) western blot analysis in HL-60 cell line lysates (35 µg/lane). This demonstrates the WDR21A antibody detected the WDR21A protein (arrow).