



[Go to Product page](#)

Datasheet for ABIN1882006
anti-ZC3HAV1L antibody (C-Term)

1 Image

Overview

Quantity:	400 µL
Target:	ZC3HAV1L
Binding Specificity:	AA 226-254, C-Term
Reactivity:	Human
Host:	Rabbit
Clonality:	Polyclonal
Conjugate:	This ZC3HAV1L antibody is un-conjugated
Application:	Western Blotting (WB)

Product Details

Immunogen:	This ZC3HAV1L antibody is generated from rabbits immunized with a KLH conjugated synthetic peptide between 226-254 amino acids from the C-terminal region of human ZC3HAV1L.
Clone:	RB41593
Isotype:	Ig Fraction
Purification:	This antibody is purified through a protein A column, followed by peptide affinity purification.

Target Details

Target:	ZC3HAV1L
Alternative Name:	ZC3HAV1L (ZC3HAV1L Products)

Target Details

Background: The function of this protein is unknown.

Molecular Weight: 32962

NCBI Accession: [NP_542391](#)

UniProt: [Q96H79](#)

Application Details

Application Notes: WB: 1:1000

Restrictions: For Research Use only

Handling

Format: Liquid

Buffer: Purified polyclonal antibody supplied in PBS with 0.09 % (W/V) sodium azide.

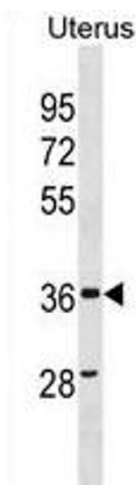
Preservative: Sodium azide

Precaution of Use: This product contains Sodium azide: a POISONOUS AND HAZARDOUS SUBSTANCE which should be handled by trained staff only.

Storage: 4 °C, -20 °C

Expiry Date: 6 months

Images



Western Blotting

Image 1. ZC3HAV1L Antibody (C-term) (ABIN1882006 and ABIN2838753) western blot analysis in human Uterus tissue lysates (35 µg/lane). This demonstrates the ZC3HAV1L antibody detected the ZC3HAV1L protein (arrow).