



Datasheet for ABIN1882007
anti-ZCCHC3 antibody (AA 210-238)



[Go to Product page](#)

1 Image

Overview

Quantity:	400 µL
Target:	ZCCHC3
Binding Specificity:	AA 210-238
Reactivity:	Human
Host:	Rabbit
Clonality:	Polyclonal
Application:	Western Blotting (WB)

Product Details

Immunogen:	This ZCCHC3 antibody is generated from rabbits immunized with a KLH conjugated synthetic peptide between 210-238 amino acids from the Central region of human ZCCHC3.
Clone:	RB40474
Isotype:	Ig Fraction
Purification:	This antibody is purified through a protein A column, followed by peptide affinity purification.

Target Details

Target:	ZCCHC3
Alternative Name:	ZCCHC3 (ZCCHC3 Products)
Background:	ZCCHC3 is a zinc-finger protein containing 3 CCHC-type zinc fingers.
Molecular Weight:	43547

Target Details

NCBI Accession: [NP_149080](#)

UniProt: [Q9NUD5](#)

Application Details

Application Notes: WB: 1:1000

Restrictions: For Research Use only

Handling

Format: Liquid

Buffer: Purified polyclonal antibody supplied in PBS with 0.09 % (W/V) sodium azide.

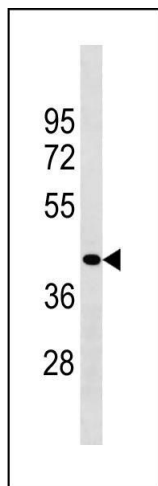
Preservative: Sodium azide

Precaution of Use: This product contains Sodium azide: a POISONOUS AND HAZARDOUS SUBSTANCE which should be handled by trained staff only.

Storage: 4 °C, -20 °C

Expiry Date: 6 months

Images



Western Blotting

Image 1. ZCCHC3 Antibody (Center) (ABIN1882007 and ABIN2843227) western blot analysis in HepG2 cell line lysates (35 µg/lane). This demonstrates the ZCCHC3 antibody detected the ZCCHC3 protein (arrow).