

Datasheet for ABIN1882008

anti-ZFP36L1 antibody (N-Term)**1** Image**5** Publications[Go to Product page](#)

Overview

Quantity:	400 µL
Target:	ZFP36L1
Binding Specificity:	AA 64-93, N-Term
Reactivity:	Mouse
Host:	Rabbit
Clonality:	Polyclonal
Conjugate:	This ZFP36L1 antibody is un-conjugated
Application:	Western Blotting (WB)

Product Details

Immunogen:	This ZFP36L1 antibody is generated from rabbits immunized with a KLH conjugated synthetic peptide between 64-93 amino acids from the N-terminal region of human ZFP36L1.
Clone:	RB40956
Isotype:	Ig Fraction
Predicted Reactivity:	Rat
Purification:	This antibody is purified through a protein A column, followed by peptide affinity purification.

Target Details

Target:	ZFP36L1
Alternative Name:	ZFP36L1 (ZFP36L1 Products)

Target Details

Background:	This gene is a member of the TIS11 family of early response genes. Family members are induced by various agonists such as the phorbol ester TPA and the polypeptide mitogen EGF. The gene is well conserved across species and has a promoter that contains motifs seen in other early-response genes. The encoded protein contains a distinguishing putative zinc finger domain with a repeating cys-his motif. This putative nuclear transcription factor most likely functions in regulating the response to growth factors.
Molecular Weight:	36314
NCBI Accession:	NP_001231627 , NP_001231630 , NP_004917
UniProt:	Q07352

Application Details

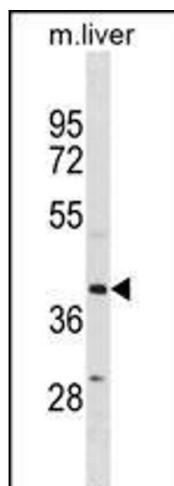
Application Notes:	WB: 1:1000
Restrictions:	For Research Use only

Handling

Format:	Liquid
Buffer:	Purified polyclonal antibody supplied in PBS with 0.09 % (W/V) sodium azide.
Preservative:	Sodium azide
Precaution of Use:	This product contains Sodium azide: a POISONOUS AND HAZARDOUS SUBSTANCE which should be handled by trained staff only.
Storage:	4 °C,-20 °C
Expiry Date:	6 months

Publications

Product cited in:	Mishra, Chandravanshi, Trigun, Krishnamurthy: "Ambroxol modulates 6-Hydroxydopamine-induced temporal reduction in Glucocerebrosidase (GCase) enzymatic activity and Parkinson's disease symptoms." in: Biochemical pharmacology , Vol. 155, pp. 479-493, (2019) (PubMed).
-------------------	--



Western Blotting

Image 1. ZFP36L1 Antibody (N-term) (ABIN1882008 and ABIN2838796) western blot analysis in mouse liver tissue lysates (35 µg/lane). This demonstrates the ZFP36L1 antibody detected the ZFP36L1 protein (arrow).