



[Go to Product page](#)

Datasheet for ABIN1882047

## anti-CREB3L4 antibody (AA 1-300)

1 Image

1 Publication

### Overview

Quantity:	400 µL
Target:	CREB3L4
Binding Specificity:	AA 1-300
Reactivity:	Human, Rat
Host:	Mouse
Clonality:	Monoclonal
Conjugate:	This CREB3L4 antibody is un-conjugated
Application:	Western Blotting (WB)

### Product Details

Immunogen:	This CREB3L4 antibody is generated from mice immunized with a recombinant between 1-300 amino acids from the region of human CREB3L4.
Clone:	1165CT16-1-1
Isotype:	IgG1
Purification:	This antibody is purified through a protein G column, eluted with high and low pH buffers and neutralized immediately, followed by dialysis against PBS.

### Target Details

Target:	CREB3L4
Alternative Name:	CREB3L4 ( <a href="#">CREB3L4 Products</a> )

## Target Details

---

**Background:** Transcriptional activator that may play a role in the unfolded protein response. Binds to the UPR element (UPRE) but not to CRE element. Preferentially binds DNA with to the consensus sequence 5'-T[GT]ACGT[GA][GT]-3' and has transcriptional activation activity from UPRE. Binds to NF-kappa-B site and has transcriptional activation activity from NF-kappa-B-containing regulatory elements (By similarity).

**Molecular Weight:** 43432

**UniProt:** [Q8TEY5](#)

**Pathways:** [Thyroid Hormone Synthesis](#)

## Application Details

---

**Application Notes:** WB: 1:1000

**Restrictions:** For Research Use only

## Handling

---

**Format:** Liquid

**Buffer:** Purified monoclonal antibody supplied in PBS with 0.09 % (W/V) sodium azide.

**Preservative:** Sodium azide

**Precaution of Use:** This product contains Sodium azide: a POISONOUS AND HAZARDOUS SUBSTANCE which should be handled by trained staff only.

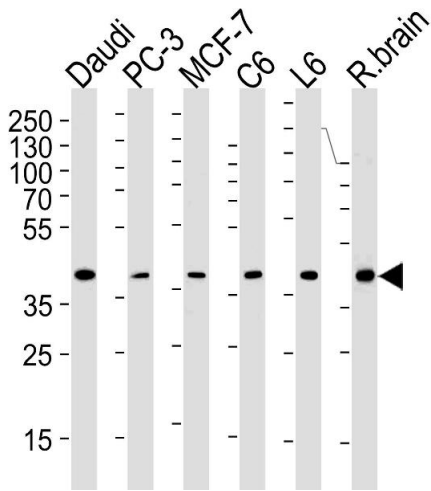
**Storage:** 4 °C,-20 °C

**Expiry Date:** 6 months

## Publications

---

**Product cited in:** Tekin, Erden, Ozyalin, Cigremis, Colak, Sandal: "The effects of intracerebroventricular infusion of irisin on feeding behaviour in rats." in: **Neuroscience letters**, Vol. 645, pp. 25-32, (2017) ([PubMed](#)).



### Western Blotting

**Image 1.** CREB3L4 Antibody (M01) (ABIN1882047 and ABIN2838479) western blot analysis in Daudi,PC-3,MCF-7,rat C6 and L6 cell line ,rat brain tissue lysates (35  $\mu$ g/lane).This demonstrates the CREB3L4 (M01)antibody detected the CREB3L4 (M01)protein (arrow).