

Datasheet for ABIN1882062

anti-AGL antibody (AA 357-387)

2 Images

10 Publications

[Go to Product page](#)

Overview

Quantity:	400 µL
Target:	AGL
Binding Specificity:	AA 357-387
Reactivity:	Human
Host:	Rabbit
Clonality:	Polyclonal
Conjugate:	This AGL antibody is un-conjugated
Application:	Western Blotting (WB), Immunofluorescence (IF)

Product Details

Immunogen:	This AGL antibody is generated from rabbits immunized with a KLH conjugated synthetic peptide between 357-387 amino acids from the Central region of human AGL.
Clone:	RB4976
Isotype:	Ig Fraction
Purification:	This antibody is prepared by Saturated Ammonium Sulfate (SAS) precipitation followed by dialysis against PBS.

Target Details

Target:	AGL
Alternative Name:	AGL (AGL Products)

Target Details

Background:	AGL is a glycogen debrancher enzyme which is involved in glycogen degradation. This enzyme has two independent catalytic activities which occur at different sites on the protein: a 4-alpha-glucotransferase activity and a amylo-1,6-glucosidase activity. Mutations in the AGL gene are associated with glycogen storage disease although a wide range of enzymatic and clinical variability occurs which may be due to tissue-specific alternative splicing.
Molecular Weight:	174764
NCBI Accession:	NP_000019 , NP_000633 , NP_000634 , NP_000635 , NP_000636 , NP_000637
UniProt:	P35573
Pathways:	Cellular Glucan Metabolic Process

Application Details

Application Notes:	IF: 1:10~50. WB: 1:1000
Restrictions:	For Research Use only

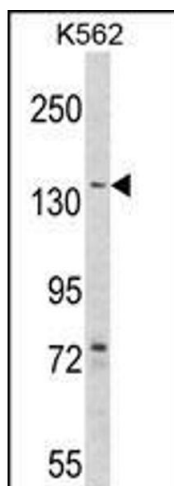
Handling

Format:	Liquid
Buffer:	Purified polyclonal antibody supplied in PBS with 0.09 % (W/V) sodium azide.
Preservative:	Sodium azide
Precaution of Use:	This product contains Sodium azide: a POISONOUS AND HAZARDOUS SUBSTANCE which should be handled by trained staff only.
Storage:	4 °C,-20 °C
Expiry Date:	6 months

Publications

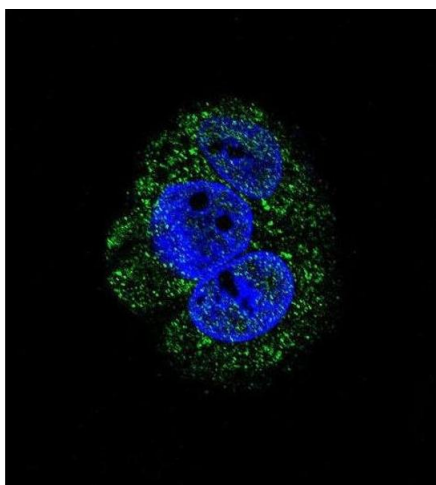
Product cited in:	Mishra, Chandravanshi, Trigun, Krishnamurthy: "Ambroxol modulates 6-Hydroxydopamine-induced temporal reduction in Glucocerebrosidase (GCase) enzymatic activity and Parkinson's disease symptoms." in: Biochemical pharmacology , Vol. 155, pp. 479-493, (2019) (PubMed).
-------------------	--

There are more publications referencing this product on: [Product page](#)



Western Blotting

Image 1. Western blot analysis of hAGL- (ABIN1882062 and ABIN2839246) in K562 cell line lysates (35 µg/lane). AGL (arrow) was detected using the purified Pab.



Immunofluorescence

Image 2. Confocal immunofluorescent analysis of AGL Antibody (Center) (ABIN1882062 and ABIN2839246) with HepG2 cell followed by Alexa Fluor 488-conjugated goat anti-rabbit IgG (green). DAPI was used to stain the cell nuclear (blue).