

Datasheet for ABIN1882065  
**anti-ATG4B antibody (C-Term)**

4 Images

6 Publications

[Go to Product page](#)

## Overview

Quantity:	400 µL
Target:	ATG4B
Binding Specificity:	AA 358-390, C-Term
Reactivity:	Human
Host:	Rabbit
Clonality:	Polyclonal
Conjugate:	This ATG4B antibody is un-conjugated
Application:	Western Blotting (WB), Immunofluorescence (IF), Immunohistochemistry (Paraffin-embedded Sections) (IHC (p))

## Product Details

Immunogen:	This ATG4B antibody is generated from rabbits immunized with a KLH conjugated synthetic peptide between 358-390 amino acids from the C-terminal region of human ATG4B.
Clone:	RB7560
Isotype:	Ig Fraction
Predicted Reactivity:	M
Purification:	This antibody is prepared by Saturated Ammonium Sulfate (SAS) precipitation followed by dialysis against PBS.

## Target Details

Target:	ATG4B
---------	-------

## Target Details

Alternative Name: ATG4B ([ATG4B Products](#))

Background: Macroautophagy is the major inducible pathway for the general turnover of cytoplasmic constituents in eukaryotic cells, it is also responsible for the degradation of active cytoplasmic enzymes and organelles during nutrient starvation. Macroautophagy involves the formation of double-membrane bound autophagosomes which enclose the cytoplasmic constituent targeted for degradation in a membrane bound structure, which then fuse with the lysosome (or vacuole) releasing a single-membrane bound autophagic bodies which are then degraded within the lysosome (or vacuole). APG4 is a cysteine protease required for autophagy, which cleaves the C-terminal part of either MAP1LC3, GABARAPL2 or GABARAP, allowing the liberation of form I. A subpopulation of form I is subsequently converted to a smaller form (form II). Form II, with a revealed C-terminal glycine, is considered to be the phosphatidylethanolamine (PE)-conjugated form, and has the capacity for the binding to autophagosomes.

Molecular Weight: 44294

NCBI Accession: [NP\\_037457](#), [NP\\_847896](#)

UniProt: [Q9Y4P1](#)

Pathways: [Autophagy](#)

## Application Details

Application Notes: IF: 1:100. WB: 1:1000. WB: 1:1000. IHC-P: 1:50~100

Restrictions: For Research Use only

## Handling

Format: Liquid

Buffer: Purified polyclonal antibody supplied in PBS with 0.09 % (W/V) sodium azide.

Preservative: Sodium azide

Precaution of Use: This product contains Sodium azide: a POISONOUS AND HAZARDOUS SUBSTANCE which should be handled by trained staff only.

Storage: 4 °C,-20 °C

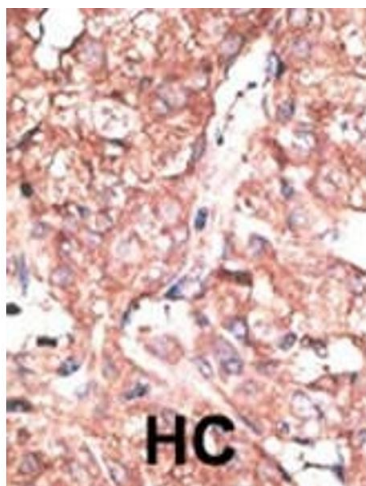
Expiry Date: 6 months

## Publications

Product cited in: Tekin, Erden, Ozyalin, Cigremis, Colak, Sandal: "The effects of intracerebroventricular infusion of irisin on feeding behaviour in rats." in: **Neuroscience letters**, Vol. 645, pp. 25-32, (2017) ([PubMed](#)).

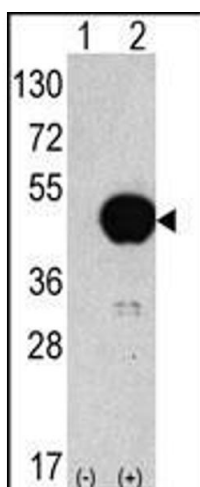
There are more publications referencing this product on: [Product page](#)

## Images



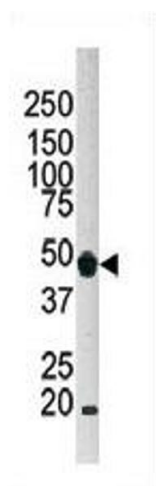
### Immunohistochemistry (Paraffin-embedded Sections)

**Image 1.** Formalin-fixed and paraffin-embedded human cancer tissue reacted with the primary antibody, which was peroxidase-conjugated to the secondary antibody, followed by DAB staining. This data demonstrates the use of this antibody for immunohistochemistry, clinical relevance has not been evaluated. BC = breast carcinoma, HC = hepatocarcinoma.



### Western Blotting

**Image 2.** Western blot analysis of anti-hG4B-373 Pab 1809c in 293 cell line lysates transiently transfected with the ATG4B gene (2 µg/lane). hG4B-373 (arrow) was detected using the purified Pab.



#### Western Blotting

**Image 3.** Western blot analysis of anti-G4B Pab 1809c in HeLa cell lysate. G4B (arrow) was detected using the purified Pab.

Please check the [product details page](#) for more images. Overall 4 images are available for ABIN1882065.