

Datasheet for ABIN1882069

**anti-CAMKK2 antibody (C-Term)****2** Images**5** Publications[Go to Product page](#)

## Overview

Quantity:	400 µL
Target:	CAMKK2
Binding Specificity:	AA 483-512, C-Term
Reactivity:	Human
Host:	Rabbit
Clonality:	Polyclonal
Conjugate:	This CAMKK2 antibody is un-conjugated
Application:	Western Blotting (WB), Immunohistochemistry (Paraffin-embedded Sections) (IHC (p))

## Product Details

Immunogen:	This CAMKK2 antibody is generated from rabbits immunized with a KLH conjugated synthetic peptide between 483-512 amino acids from the C-terminal region of human CAMKK2.
Clone:	RB12560
Isotype:	Ig Fraction
Predicted Reactivity:	M, Rat
Purification:	This antibody is prepared by Saturated Ammonium Sulfate (SAS) precipitation followed by dialysis against PBS.

## Target Details

Target:	CAMKK2
---------	--------

## Target Details

Alternative Name:	CAMKK2 ( <a href="#">CAMKK2 Products</a> )
Background:	CAMKK2 belongs to the Serine/Threonine protein kinase family, and to the Ca(2+)/calmodulin-dependent protein kinase subfamily. This protein plays a role in the calcium/calmodulin-dependent (CaM) kinase cascade by phosphorylating the downstream kinases CaMK1 and CaMK4. Isoform 1, isoform 2 and isoform 3 phosphorylate CAMK1 and CAMK4. Isoform 3 phosphorylates CAMK1D. Isoform 4, isoform 5 and isoform 6 lacking part of the calmodulin-binding domain are inactive. CAMKK2 appears to be involved in hippocampal activation of CREB1.
Molecular Weight:	64746
NCBI Accession:	<a href="#">NP_001257414</a> , <a href="#">NP_001257415</a> , <a href="#">NP_006540</a> , <a href="#">NP_705719</a> , <a href="#">NP_705720</a> , <a href="#">NP_757363</a> , <a href="#">NP_757364</a> , <a href="#">NP_757365</a> , <a href="#">NP_757380</a>
UniProt:	<a href="#">Q96RR4</a>
Pathways:	<a href="#">AMPK Signaling</a>

## Application Details

Application Notes:	WB: 1:1000. IHC-P: 1:50
Restrictions:	For Research Use only

## Handling

Format:	Liquid
Buffer:	Purified polyclonal antibody supplied in PBS with 0.09 % (W/V) sodium azide.
Preservative:	Sodium azide
Precaution of Use:	This product contains Sodium azide: a POISONOUS AND HAZARDOUS SUBSTANCE which should be handled by trained staff only.
Storage:	4 °C, -20 °C
Expiry Date:	6 months

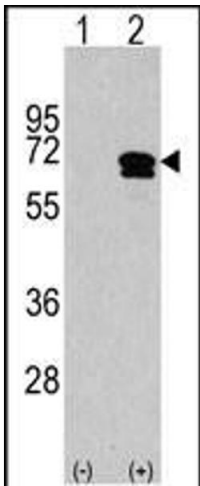
## Publications

Product cited in:	Hirakawa, Nakayama, Shibata, Sekine: "Association of cellular localization of glycogen synthase kinase 3beta in the digestive tract with cancer development." in: <b>Oncology reports</b> , Vol. 22, Issue 3, pp. 481-5, (2009) ( <a href="#">PubMed</a> ).
-------------------	---



**Immunohistochemistry (Paraffin-embedded Sections)**

**Image 1.** Formalin-fixed and paraffin-embedded human brain tissue reacted with CKK2 antibody (C-term) , which was peroxidase-conjugated to the secondary antibody, followed by DAB staining. This data demonstrates the use of this antibody for immunohistochemistry, clinical relevance has not been evaluated.



**Western Blotting**

**Image 2.** Western blot analysis of CKK2 (arrow) using rabbit polyclonal CKK2 Antibody (C-term) (ABIN1882069 and ABIN2841278). 293 cell lysates (2 µg/lane) either nontransfected (Lane 1) or transiently transfected with the CKK2 gene (Lane 2) (Origene Technologies).