

Datasheet for ABIN1882070
anti-CSE1L antibody (N-Term)

5 Images

8 Publications

[Go to Product page](#)

Overview

Quantity:	400 µL
Target:	CSE1L
Binding Specificity:	AA 55-84, N-Term
Reactivity:	Human, Mouse
Host:	Rabbit
Clonality:	Polyclonal
Application:	Western Blotting (WB), Immunofluorescence (IF), Immunohistochemistry (Paraffin-embedded Sections) (IHC (p))

Product Details

Immunogen:	This Cellular Apoptosis Susceptibility antibody is generated from rabbits immunized with a KLH conjugated synthetic peptide between 55-84 amino acids from the N-terminal region of human Cellular Apoptosis Susceptibility.
Clone:	RB9332
Isotype:	Ig Fraction
Predicted Reactivity:	B, Zf
Purification:	This antibody is prepared by Saturated Ammonium Sulfate (SAS) precipitation followed by dialysis against PBS.

Target Details

Target:	CSE1L
---------	-------

Target Details

Alternative Name:	Cellular Apoptosis Susceptibility (CSE1L Products)
Background:	Proteins that carry a nuclear localization signal (NLS) are transported into the nucleus by the importin-alpha/beta heterodimer. Importin-alpha binds the NLS, while importin-beta mediates translocation through the nuclear pore complex. After translocation, RanGTP binds importin-beta and displaces importin-alpha. Importin-alpha must then be returned to the cytoplasm, leaving the NLS protein behind. CSE1L binds strongly to NLS-free importin-alpha, and this binding is released in the cytoplasm by the combined action of RANBP1 and RANGAP1. In addition, CSE1L may play a role both in apoptosis and in cell proliferation.
Molecular Weight:	110417
NCBI Accession:	NP_001243064 , NP_001307
UniProt:	P55060

Application Details

Application Notes:	IF: 1:100. WB: 1:1000. WB: 1:1000. IHC-P: 1:100. IHC-P: 1:100
Restrictions:	For Research Use only

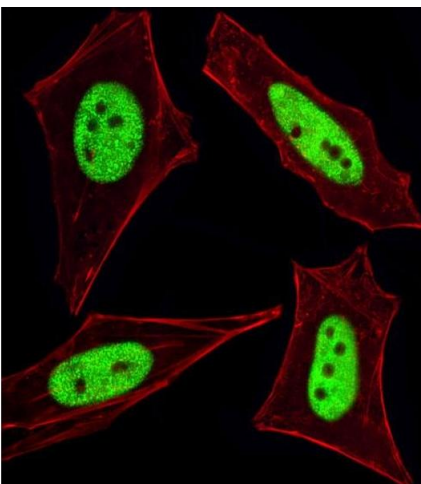
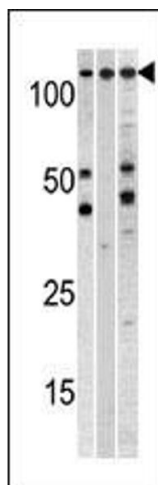
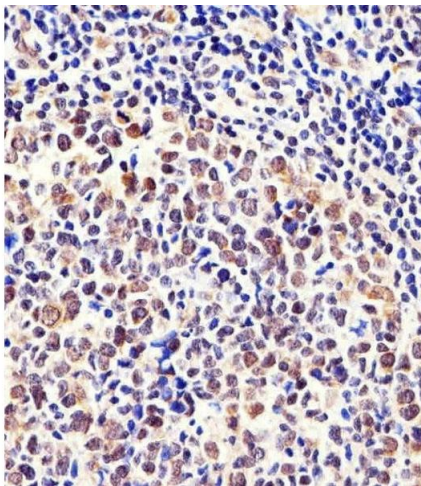
Handling

Format:	Liquid
Buffer:	Purified polyclonal antibody supplied in PBS with 0.09 % (W/V) sodium azide.
Preservative:	Sodium azide
Precaution of Use:	This product contains Sodium azide: a POISONOUS AND HAZARDOUS SUBSTANCE which should be handled by trained staff only.
Storage:	4 °C,-20 °C
Expiry Date:	6 months

Publications

Product cited in:	Mei, Li, Chu, Yiu, Lo: "The inhibitory effects of silver diamine fluoride at different concentrations on matrix metalloproteinases." in: Dental materials : official publication of the Academy of Dental Materials , Vol. 28, Issue 8, pp. 903-8, (2012) (PubMed).
-------------------	--

There are more publications referencing this product on: [Product page](#)



Immunohistochemistry (Paraffin-embedded Sections)

Image 1. Immunohistochemical analysis of paraffin-embedded H. tonsil section using CSE1L Antibody (ABIN1882070 and ABIN2838356). (ABIN1882070 and ABIN2838356) was diluted at 1:100 dilution. A peroxidase-conjugated goat anti-rabbit IgG at 1:400 dilution was used as the secondary antibody, followed by DAB staining.

Western Blotting

Image 2. Western blot analysis of anti-CSE1L Pab (ABIN1882070 and ABIN2838356) in, from left to right, CEM, and mouse heart cell line lysates (35 µg/lane). CSE1L (arrow) was detected using the purified Pab.

Immunofluorescence

Image 3. Fluorescent image of HeLa cells stained with Cellular Apoptosis Susceptibility Antibody (N-term) (ABIN1882070 and ABIN2838356). (ABIN1882070 and ABIN2838356) was diluted at 1:100 dilution. An Alexa Fluor 488-conjugated goat anti-rabbit IgG at 1:400 dilution was used as the secondary antibody (green). Cytoplasmic actin was counterstained with Alexa Fluor® 555 conjugated with Phalloidin (red).

Please check the [product details page](#) for more images. Overall 5 images are available for ABIN1882070.