

Datasheet for ABIN1882077
anti-ENO1 antibody (C-Term)[Go to Product page](#)

4 Images

2 Publications

Overview

| | |
|----------------------|--|
| Quantity: | 400 µL |
| Target: | ENO1 |
| Binding Specificity: | AA 405-434, C-Term |
| Reactivity: | Human, Mouse |
| Host: | Rabbit |
| Clonality: | Polyclonal |
| Conjugate: | This ENO1 antibody is un-conjugated |
| Application: | Western Blotting (WB), Immunofluorescence (IF), Immunohistochemistry (Paraffin-embedded Sections) (IHC (p)), Flow Cytometry (FACS) |

Product Details

| | |
|-----------------------|--|
| Immunogen: | This ENOA antibody is generated from rabbits immunized with a KLH conjugated synthetic peptide between 405-434 amino acids from the C-terminal region of human ENOA. |
| Clone: | RB19995 |
| Isotype: | Ig Fraction |
| Predicted Reactivity: | Pr |
| Purification: | This antibody is prepared by Saturated Ammonium Sulfate (SAS) precipitation followed by dialysis against PBS. |

Target Details

| | |
|---------|------|
| Target: | ENO1 |
|---------|------|

Target Details

| | |
|-------------------|---|
| Abstract: | ENO1 Products |
| Background: | ENO1 is one of three enolase isoenzymes found in mammals, the protein alpha-enolase, a homodimeric soluble enzyme, and is also a shorter monomeric structural lens protein, tau-crystallin. The two proteins are made from the same message. The full length protein, the isoenzyme, is found in the cytoplasm. The shorter protein is produced from an alternative translation start, is localized to the nucleus, and has been found to bind to an element in the c-myc promoter. |
| Molecular Weight: | 47169 |
| NCBI Accession: | NP_001188412 , NP_001419 |
| UniProt: | P06733 |

Application Details

| | |
|--------------------|--|
| Application Notes: | IF: 1:10~50. WB: 1:1000. IHC-P: 1:10~50. FC: 1:10~50 |
| Restrictions: | For Research Use only |

Handling

| | |
|--------------------|--|
| Format: | Liquid |
| Buffer: | Purified polyclonal antibody supplied in PBS with 0.09 % (W/V) sodium azide. |
| Preservative: | Sodium azide |
| Precaution of Use: | This product contains Sodium azide: a POISONOUS AND HAZARDOUS SUBSTANCE which should be handled by trained staff only. |
| Storage: | 4 °C, -20 °C |
| Expiry Date: | 6 months |

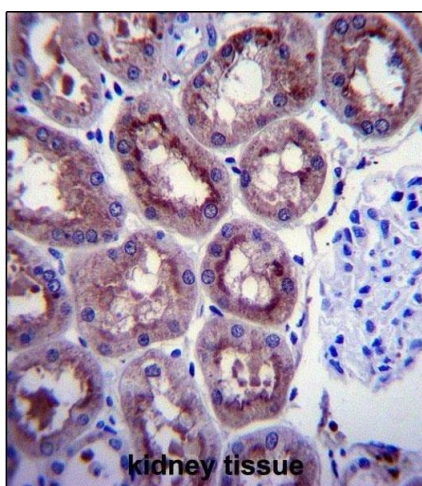
Publications

| | |
|-------------------|---|
| Product cited in: | <p>Wendeler, Pabst, Wang, Strouse, Wang, Hunter: "Process-scale purification and analytical characterization of highly gamma-carboxylated recombinant human prothrombin." in: Journal of chromatography. A, Vol. 1325, pp. 171-8, (2014) (PubMed).</p> <p>Yang, Ko, Yang, Kim, Seo, Park, Choi, Seong, Kweon: "Interleukin-1 promotes coagulation, which is necessary for protective immunity in the lung against Streptococcus pneumoniae infection."</p> |
|-------------------|---|

in: **The Journal of infectious diseases**, Vol. 207, Issue 1, pp. 50-60, (2012) ([PubMed](#)).

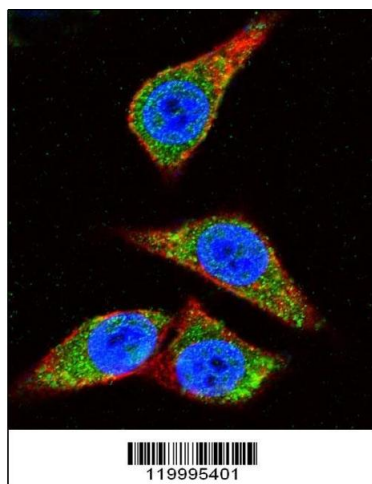
Lim, Joy, Hill, San Brian Chia: "Novel agmatine and agmatine-like peptidomimetic inhibitors of the West Nile virus NS2B/NS3 serine protease." in: **European journal of medicinal chemistry**, Vol. 46, Issue 7, pp. 3130-4, (2011) ([PubMed](#)).

Images



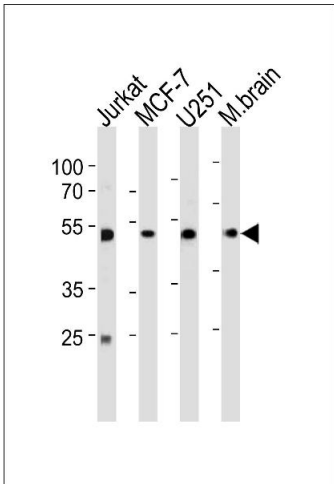
Immunohistochemistry (Paraffin-embedded Sections)

Image 1. ENOA Antibody (C-term) (ABIN1882077 and ABIN2839495) immunohistochemistry analysis in formalin fixed and paraffin embedded human kidney tissue followed by peroxidase conjugation of the secondary antibody and DAB staining. This data demonstrates the use of ENOA Antibody (C-term) for immunohistochemistry. Clinical relevance has not been evaluated.



Immunofluorescence

Image 2. Confocal immunofluorescent analysis of ENOA Antibody (C-term) (ABIN1882077 and ABIN2839495) with HeLa cells followed by Alexa Fluor 488-conjugated goat anti-rabbit IgG (green). Actin filaments have been labeled with Alexa Fluor 555 phalloidin (red). DAPI was used to stain the cell nuclei (blue).



Western Blotting

Image 3. ENOA Antibody (C-term) (ABIN1882077 and ABIN2839495) western blot analysis in Jurkat,MCF-7, cell line and mouse brain tissue lysates (35 µg/lane).This demonstrates the ENOA antibody detected the ENOA protein (arrow).

Please check the [product details page](#) for more images. Overall 4 images are available for ABIN1882077.