



[Go to Product page](#)

Datasheet for ABIN1882078

anti-ENO3 antibody (AA 237-264)

3 Images

1 Publication

Overview

Quantity:	400 µL
Target:	ENO3
Binding Specificity:	AA 237-264
Reactivity:	Human
Host:	Rabbit
Clonality:	Polyclonal
Conjugate:	This ENO3 antibody is un-conjugated
Application:	Western Blotting (WB), Immunohistochemistry (Paraffin-embedded Sections) (IHC (p)), Flow Cytometry (FACS)

Product Details

Immunogen:	This ENOB antibody is generated from rabbits immunized with a KLH conjugated synthetic peptide between 237-264 amino acids from the Central region of human ENOB.
Clone:	RB19997
Isotype:	Ig Fraction
Predicted Reactivity:	B, M, Pig, Rat
Purification:	This antibody is prepared by Saturated Ammonium Sulfate (SAS) precipitation followed by dialysis against PBS.

Target Details

Target:	ENO3
---------	------

Target Details

Abstract:	ENO3 Products
Background:	ENOB is one of the three enolase isoenzymes found in mammals. This isoenzyme, a homodimer, is found in skeletal muscle cells in the adult. A switch from alpha enolase to beta enolase occurs in muscle tissue during development in rodents. Mutations in its gene can be associated with metabolic myopathies that may result from decreased stability of the enzyme.
Molecular Weight:	46987
NCBI Accession:	NP_001180432 , NP_001967 , NP_443739
UniProt:	P13929

Application Details

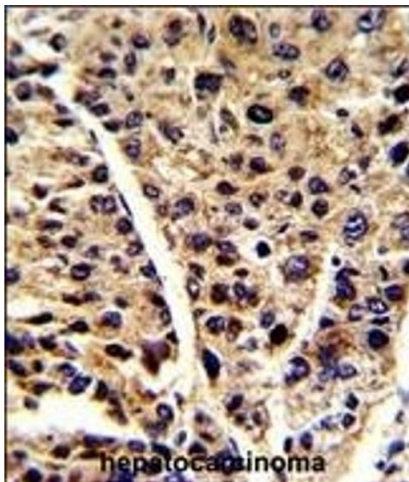
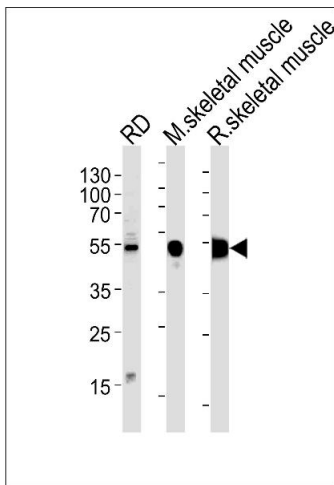
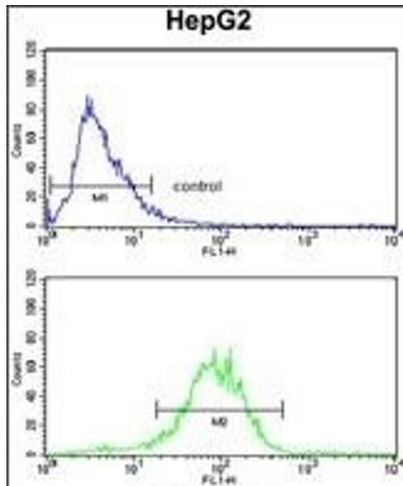
Application Notes:	WB: 1:1000. IHC-P: 1:50~100. FC: 1:10~50
Restrictions:	For Research Use only

Handling

Format:	Liquid
Buffer:	Purified polyclonal antibody supplied in PBS with 0.09 % (W/V) sodium azide.
Preservative:	Sodium azide
Precaution of Use:	This product contains Sodium azide: a POISONOUS AND HAZARDOUS SUBSTANCE which should be handled by trained staff only.
Storage:	4 °C,-20 °C
Expiry Date:	6 months

Publications

Product cited in:	Hirakawa, Nakayama, Shibata, Sekine: "Association of cellular localization of glycogen synthase kinase 3beta in the digestive tract with cancer development." in: Oncology reports , Vol. 22, Issue 3, pp. 481-5, (2009) (PubMed).
-------------------	-------------------------------------------------------------------------------------------------------------------------------------------------------------------------------------------------------------------------------------------------------------



Flow Cytometry

Image 1. ENOB Antibody (Center) (ABIN1882078 and ABIN2839500) flow cytometry analysis of HepG2 cells (bottom histogram) compared to a negative control cell (top histogram). FITC-conjugated goat-anti-rabbit secondary antibodies were used for the analysis.

Western Blotting

Image 2. ENOB Antibody (Center) (ABIN1882078 and ABIN2839500) western blot analysis in RD cell line and mouse skeletal muscle, rat skeletal muscle lysates (35 μ g/lane). This demonstrates the ENOB antibody detected the ENOB protein (arrow).

Immunohistochemistry (Paraffin-embedded Sections)

Image 3. Formalin-fixed and paraffin-embedded human hepatocarcinoma reacted with ENOB Antibody (Center), which was peroxidase-conjugated to the secondary antibody, followed by DAB staining. This data demonstrates the use of this antibody for immunohistochemistry, clinical relevance has not been evaluated.