

Datasheet for ABIN1882079

anti-EPH Receptor A10 antibody (AA 440-469)[Go to Product page](#)**2** Images

Overview

Quantity:	400 µL
Target:	EPH Receptor A10 (EPHA10)
Binding Specificity:	AA 440-469
Reactivity:	Human
Host:	Rabbit
Clonality:	Polyclonal
Conjugate:	This EPH Receptor A10 antibody is un-conjugated
Application:	Western Blotting (WB), Immunohistochemistry (Paraffin-embedded Sections) (IHC (p))

Product Details

Immunogen:	This EPHA10 antibody is generated from rabbits immunized with a KLH conjugated synthetic peptide between 440-469 amino acids from the Central region of human EPHA10.
Clone:	RB13036
Isotype:	Ig Fraction
Purification:	This antibody is prepared by Saturated Ammonium Sulfate (SAS) precipitation followed by dialysis against PBS.

Target Details

Target:	EPH Receptor A10 (EPHA10)
Alternative Name:	EPHA10 (EPHA10 Products)

Target Details

Background:	EPHA10 is a receptor for members of the ephrin-A family. It binds to EFNA3, EFNA4 and EFNA5.
Molecular Weight:	109716
NCBI Accession:	NP_001092909 , NP_775912
UniProt:	Q5JZY3
Pathways:	RTK Signaling

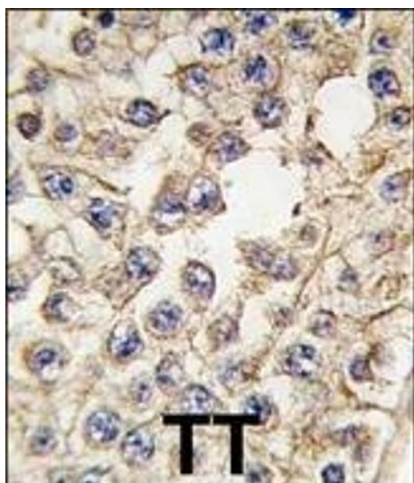
Application Details

Application Notes:	WB: 1:1000. IHC-P: 1:10~50
Restrictions:	For Research Use only

Handling

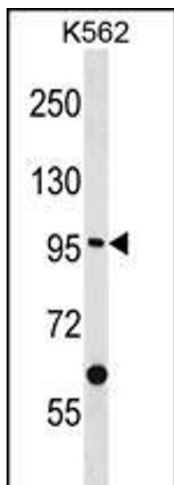
Format:	Liquid
Buffer:	Purified polyclonal antibody supplied in PBS with 0.09 % (W/V) sodium azide.
Preservative:	Sodium azide
Precaution of Use:	This product contains Sodium azide: a POISONOUS AND HAZARDOUS SUBSTANCE which should be handled by trained staff only.
Storage:	4 °C,-20 °C
Expiry Date:	6 months

Images



Immunohistochemistry (Paraffin-embedded Sections)

Image 1. Formalin-fixed and paraffin-embedded human testis tissue reacted with EPHA10 antibody (Center), which was peroxidase-conjugated to the secondary antibody, followed by DAB staining. This data demonstrates the use of this antibody for immunohistochemistry, clinical relevance has not been evaluated.



Western Blotting

Image 2. EPHA10 Antibody (Center) (ABIN1882079 and ABIN2841720) western blot analysis in K562 cell line lysates (35 µg/lane). This demonstrates the EPHA10 antibody detected the EPHA10 protein (arrow).