

Datasheet for ABIN1882082  
**anti-FKBP1A antibody (C-Term)**[Go to Product page](#)

4 Images

2 Publications

## Overview

Quantity:	400 µL
Target:	FKBP1A
Binding Specificity:	AA 55-83, C-Term
Reactivity:	Human
Host:	Rabbit
Clonality:	Polyclonal
Conjugate:	This FKBP1A antibody is un-conjugated
Application:	Western Blotting (WB), Flow Cytometry (FACS), Immunohistochemistry (Paraffin-embedded Sections) (IHC (p))

## Product Details

Immunogen:	This FKBP1A antibody is generated from rabbits immunized with a KLH conjugated synthetic peptide between 55-83 amino acids from the C-terminal region of human FKBP1A.
Clone:	RB19307
Isotype:	Ig Fraction
Predicted Reactivity:	B, Rb
Purification:	This antibody is prepared by Saturated Ammonium Sulfate (SAS) precipitation followed by dialysis against PBS.

## Target Details

Target:	FKBP1A
---------	--------

## Target Details

Alternative Name:	FKBP1A ( <a href="#">FKBP1A Products</a> )
Background:	FKBP12 is a member of the immunophilin protein family, which play a role in immunoregulation and basic cellular processes involving protein folding and trafficking. The protein is a cis-trans prolyl isomerase that binds the immunosuppressants FK506 and rapamycin. It interacts with several intracellular signal transduction proteins including type I TGF-beta receptor. It also interacts with multiple intracellular calcium release channels, and coordinates multi-protein complex formation of the tetrameric skeletal muscle ryanodine receptor. In mouse, deletion of this homologous gene causes congenital heart disorder known as noncompaction of left ventricular myocardium.
Molecular Weight:	11951
NCBI Accession:	<a href="#">NP_000792</a> , <a href="#">NP_463460</a>
UniProt:	<a href="#">P62942</a>
Pathways:	<a href="#">Negative Regulation of Transporter Activity</a> , <a href="#">Methionine Biosynthetic Process</a>

## Application Details

Application Notes:	WB: 1:1000. WB: 1:1000. IHC-P: 1:50~100. FC: 1:10~50
Restrictions:	For Research Use only

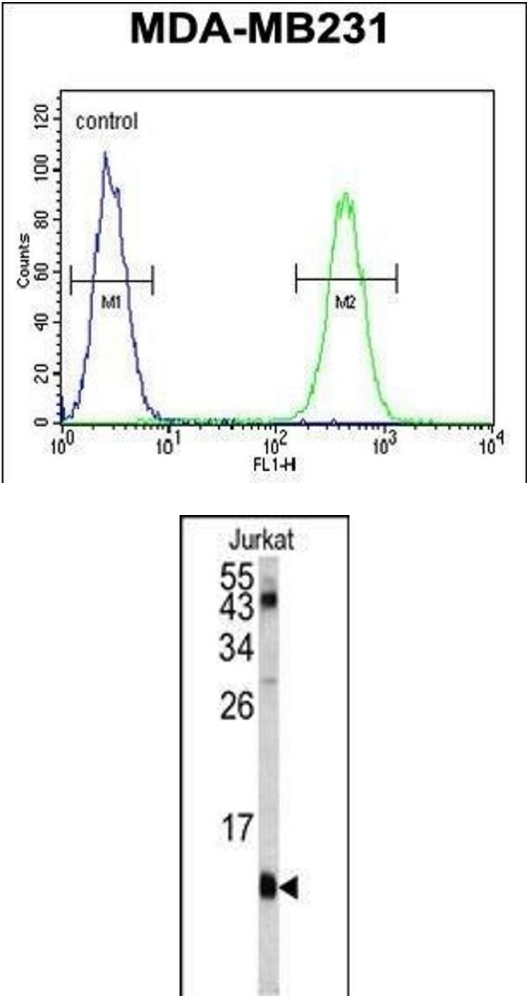
## Handling

Format:	Liquid
Buffer:	Purified polyclonal antibody supplied in PBS with 0.09 % (W/V) sodium azide.
Preservative:	Sodium azide
Precaution of Use:	This product contains Sodium azide: a POISONOUS AND HAZARDOUS SUBSTANCE which should be handled by trained staff only.
Storage:	4 °C, -20 °C
Expiry Date:	6 months

## Publications

Product cited in:	Gerard, Debyser, Desender, Baert, Brandt, Baekelandt, Engelborghs: "FK506 binding protein 12 differentially accelerates fibril formation of wild type alpha-synuclein and its clinical mutants A30P or A53T." in: <b>Journal of neurochemistry</b> , Vol. 106, Issue 1, pp. 121-33, (2008) ( <a href="#">PubMed</a> ).
-------------------	--

Shor, Zhang, Toral-Barza, Lucas, Abraham, Gibbons, Yu: "A new pharmacologic action of CCI-779 involves FKBP12-independent inhibition of mTOR kinase activity and profound repression of global protein synthesis." in: **Cancer research**, Vol. 68, Issue 8, pp. 2934-43, (2008) ([PubMed](#)).

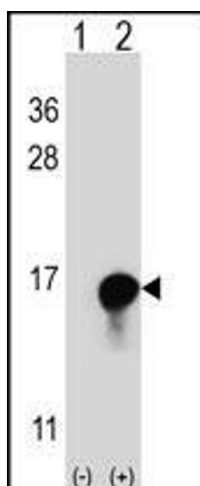


Flow Cytometry

**Image 1.** FKBP1A Antibody (C-term) (ABIN1882082 and ABIN2841885) flow cytometric analysis of MDA-M cells (right histogram) compared to a negative control cell (left histogram).FITC-conjugated goat-anti-rabbit secondary antibodies were used for the analysis.

Western Blotting

**Image 2.** Western blot analysis of FKBP1A antibody (C-term) (ABIN1882082 and ABIN2841885) in Jurkat cell line lysates (35 µg/lane). FKBP1A (arrow) was detected using the purified Pab.



#### Western Blotting

**Image 3.** Western blot analysis of FKBP1A (arrow) using rabbit polyclonal FKBP1A Antibody (C-term) (ABIN1882082 and ABIN2841885). 293 cell lysates (2 µg/lane) either nontransfected (Lane 1) or transiently transfected (Lane 2) with the FKBP1A gene.

Please check the [product details page](#) for more images. Overall 4 images are available for ABIN1882082.