



[Go to Product page](#)

Datasheet for ABIN1882088

## anti-UBE2K antibody (AA 109-139)

3 Images

3 Publications

### Overview

Quantity:	400 µL
Target:	UBE2K
Binding Specificity:	AA 109-139
Reactivity:	Human, Mouse
Host:	Rabbit
Clonality:	Polyclonal
Conjugate:	This UBE2K antibody is un-conjugated
Application:	Western Blotting (WB), Immunohistochemistry (Paraffin-embedded Sections) (IHC (p)), Immunofluorescence (IF)

### Product Details

Immunogen:	This HIP2 antibody is generated from rabbits immunized with a KLH conjugated synthetic peptide between 109-139 amino acids from the Central region of human HIP2.
Clone:	RB4144
Isotype:	Ig Fraction
Predicted Reactivity:	B
Purification:	This antibody is prepared by Saturated Ammonium Sulfate (SAS) precipitation followed by dialysis against PBS.

### Target Details

Target:	UBE2K
---------	-------

## Target Details

---

Alternative Name:	HIP2 ( <a href="#">UBE2K Products</a> )
Background:	HIP2 belongs to the ubiquitin-conjugating enzyme family. It binds selectively to a large region at the N terminus of huntingtin. This interaction is not influenced by the length of the huntingtin polyglutamine tract. This protein has been implicated in the degradation of huntingtin and suppression of apoptosis.
Molecular Weight:	22407
NCBI Accession:	<a href="#">NP_001104582</a> , <a href="#">NP_001104583</a> , <a href="#">NP_005330</a>
UniProt:	<a href="#">P61086</a>

## Application Details

---

Application Notes:	IF: 1:10~50. WB: 1:1000. IHC-P: 1:100
Restrictions:	For Research Use only

## Handling

---

Format:	Liquid
Buffer:	Purified polyclonal antibody supplied in PBS with 0.09 % (W/V) sodium azide.
Preservative:	Sodium azide
Precaution of Use:	This product contains Sodium azide: a POISONOUS AND HAZARDOUS SUBSTANCE which should be handled by trained staff only.
Storage:	4 °C,-20 °C
Expiry Date:	6 months

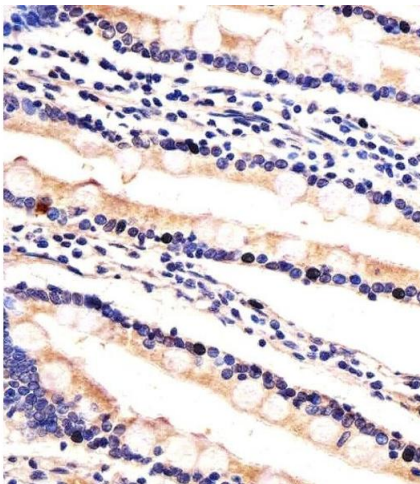
## Publications

---

Product cited in:	<p>Furukawa, Kubo, Kikuchi, Tokura, Fujita, Sakurabayashi: "Regulation of macrophage-specific gene expression by degenerated lipoproteins." in: <b>Electrophoresis</b>, Vol. 21, Issue 2, pp. 338-46, (2000) (<a href="#">PubMed</a>).</p> <p>Kikuchi, Furukawa, Kubo, Tokura, Hayashi, Nakamura, Matsuda, Sakurabayashi: "Induction of ubiquitin-conjugating enzyme by aggregated low density lipoprotein in human macrophages and its implications for atherosclerosis." in: <b>Arteriosclerosis, thrombosis, and vascular biology</b>, Vol. 20, Issue 1, pp. 128-34, (2000) (<a href="#">PubMed</a>).</p>
-------------------	--

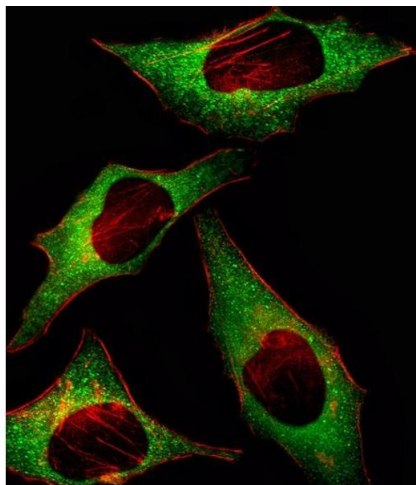
Petersén, Mani, Brundin: "Recent advances on the pathogenesis of Huntington's disease." in: **Experimental neurology**, Vol. 157, Issue 1, pp. 1-18, (1999) ([PubMed](#)).

Images



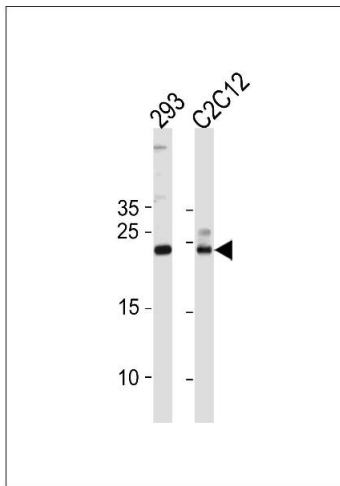
**Immunohistochemistry (Paraffin-embedded Sections)**

**Image 1.** Immunohistochemical analysis of paraffin-embedded H. small intestine section using HIP2 Antibody (Center) (ABIN1882088 and ABIN2839151). (ABIN1882088 and ABIN2839151) was diluted at 1:100 dilution. A undiluted biotinylated goat polyvalent antibody was used as the secondary, followed by DAB staining.



**Immunofluorescence**

**Image 2.** Fluorescent image of HeLa cell stained with HIP2 Antibody (Center) (ABIN1882088 and ABIN2839151)/SH030911H. HeLa cells were fixed with 4 % PFA (20 min), permeabilized with Triton X-100 (0.1 %, 10 min), then incubated with HIP2 primary antibody (1:25, 1 h at 37 °C). For secondary antibody, Alexa Fluor® 488 conjugated donkey anti-rabbit antibody (green) was used (1:400, 50 min at 37 °C). Cytoplasmic actin was counterstained with Alexa Fluor® 555 (red) conjugated Phalloidin (7 units/mL, 1 h at 37 °C). HIP2 immunoreactivity is localized to Cytoplasm significantly.



### Western Blotting

**Image 3.** HIP2 Antibody (ABIN1882088 and ABIN2839151) western blot analysis in 293, mouse C2C12 cell line lysates (35 µg/lane). This demonstrates the HIP2 antibody detected the HIP2 protein (arrow).