

Datasheet for ABIN1882103  
**anti-MTM1 antibody (N-Term)**[Go to Product page](#)

2 Images

6 Publications

## Overview

Quantity:	400 µL
Target:	MTM1
Binding Specificity:	AA 1-30, N-Term
Reactivity:	Human
Host:	Rabbit
Clonality:	Polyclonal
Conjugate:	This MTM1 antibody is un-conjugated
Application:	Western Blotting (WB), Immunohistochemistry (Paraffin-embedded Sections) (IHC (p))

## Product Details

Immunogen:	This MTM1 antibody is generated from rabbits immunized with a KLH conjugated synthetic peptide between 1-30 amino acids from the N-terminal region of human MTM1.
Clone:	RB0722
Isotype:	Ig Fraction
Predicted Reactivity:	B
Purification:	This antibody is prepared by Saturated Ammonium Sulfate (SAS) precipitation followed by dialysis against PBS.

## Target Details

Target:	MTM1
---------	------

## Target Details

Alternative Name:	MTM1 ( <a href="#">MTM1 Products</a> )
Background:	MTM1 is a member of a protein family that encodes tyrosine phosphatases. Myotubularin is required for muscle cell differentiation and mutations in MTM1 have been identified as being responsible for X-linked myotubular myopathy. MTM1 is a potent phosphatidylinositol 3-phosphate phosphatase (PI(3)P). Mutations in the MTM1 gene that cause human myotubular myopathy dramatically reduce the ability of the phosphatase to dephosphorylate PI(3)P. The findings provided evidence that myotubularin exerts its effects during myogenesis by regulating the cellular levels of the inositol lipid PI(3)P.
Molecular Weight:	69932
NCBI Accession:	<a href="#">NP_000243</a>
UniProt:	<a href="#">Q13496</a>
Pathways:	<a href="#">Inositol Metabolic Process</a> , <a href="#">Skeletal Muscle Fiber Development</a>

## Application Details

Application Notes:	WB: 1:1000. IHC-P: 1:50~100
Restrictions:	For Research Use only

## Handling

Format:	Liquid
Buffer:	Purified polyclonal antibody supplied in PBS with 0.09 % (W/V) sodium azide.
Preservative:	Sodium azide
Precaution of Use:	This product contains Sodium azide: a POISONOUS AND HAZARDOUS SUBSTANCE which should be handled by trained staff only.
Storage:	4 °C,-20 °C
Expiry Date:	6 months

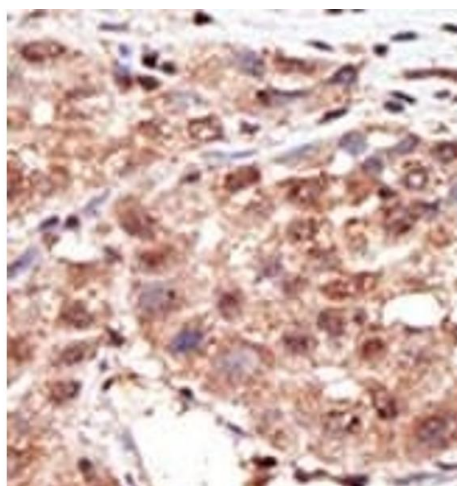
## Publications

Product cited in:	Guzel, Yazici, Pek, Doganay, Simsek, Saglam, Turan, Yazici: "Atrial natriuretic peptide and posterior pituitary neurohormone changes in patients with acute schizophrenia." in: <b>Neuropsychiatric disease and treatment</b> , Vol. 14, pp. 1855-1860, (2018) ( <a href="#">PubMed</a> ).
-------------------	--

Yuksel, Ital, Balaban, Kocak, Seven, Kucur, Erbakirci, Keskin: "Immediate breastfeeding and skin-to-skin contact during cesarean section decreases maternal oxidative stress, a prospective randomized case-controlled study." in: **The journal of maternal-fetal & neonatal medicine**, Vol. 29, Issue 16, pp. 2691-6, (2017) ([PubMed](#)).

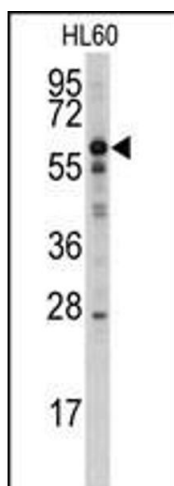
There are more publications referencing this product on: [Product page](#)

## Images



### Immunohistochemistry (Paraffin-embedded Sections)

**Image 1.** Formalin-fixed and paraffin-embedded human cancer tissue reacted with the primary antibody, which was peroxidase-conjugated to the secondary antibody, followed by AEC staining. This data demonstrates the use of this antibody for immunohistochemistry, clinical relevance has not been evaluated. BC = breast carcinoma, HC = hepatocarcinoma.



### Western Blotting

**Image 2.** Western blot analysis of anti-MTM1 Antibody (N-term) (ABIN1882103 and ABIN2841036) in HL60 cell line lysates (35 µg/lane). MTM1 (arrow) was detected using the purified Pab.