



[Go to Product page](#)

Datasheet for ABIN1882118

anti-POLG2 antibody (C-Term)

3 Images

2 Publications

Overview

Quantity:	400 µL
Target:	POLG2
Binding Specificity:	AA 348-376, C-Term
Reactivity:	Human
Host:	Rabbit
Clonality:	Polyclonal
Conjugate:	This POLG2 antibody is un-conjugated
Application:	Western Blotting (WB), Immunohistochemistry (Paraffin-embedded Sections) (IHC (p)), Flow Cytometry (FACS)

Product Details

Immunogen:	This POLG2 antibody is generated from rabbits immunized with a KLH conjugated synthetic peptide between 348-376 amino acids from the C-terminal region of human POLG2.
Clone:	RB17786
Isotype:	Ig Fraction
Purification:	This antibody is prepared by Saturated Ammonium Sulfate (SAS) precipitation followed by dialysis against PBS.

Target Details

Target:	POLG2
Alternative Name:	POLG2 (POLG2 Products)

Target Details

Background: The accuracy of mitochondrial DNA (mtDNA) replication depends on the coordinated action of many nuclear-encoded proteins and on the correct balance of nucleotides within the mitochondrial matrix. mtDNA is replicated by DNA polymerase gamma, which is composed of a 140-kD catalytic subunit(POLG1) and a 55-kD accessory subunit (POLG2).

Molecular Weight: 54911

NCBI Accession: [NP_009146](#)

UniProt: [Q9UHN1](#)

Application Details

Application Notes: WB: 1:1000. IHC-P: 1:50~100. FC: 1:10~50

Restrictions: For Research Use only

Handling

Format: Liquid

Buffer: Purified polyclonal antibody supplied in PBS with 0.09 % (W/V) sodium azide.

Preservative: Sodium azide

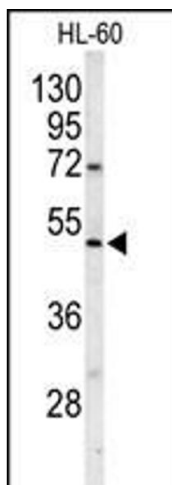
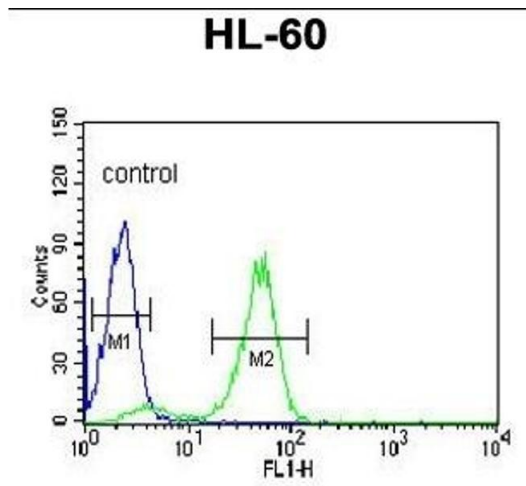
Precaution of Use: This product contains Sodium azide: a POISONOUS AND HAZARDOUS SUBSTANCE which should be handled by trained staff only.

Storage: 4 °C,-20 °C

Expiry Date: 6 months

Publications

Product cited in: Tekin, Erden, Ozyalin, Cigremis, Colak, Sandal: "The effects of intracerebroventricular infusion of irisin on feeding behaviour in rats." in: **Neuroscience letters**, Vol. 645, pp. 25-32, (2017) ([PubMed](#)).



Flow Cytometry

Image 1. POLG2 Antibody (C-term) (ABIN1882118 and ABIN2839456) flow cytometric analysis of HL-60 cells (right histogram) compared to a negative control cell (left histogram). FITC-conjugated goat-anti-rabbit secondary antibodies were used for the analysis.

Western Blotting

Image 2. Western blot analysis of POLG2 Antibody (C-term) (ABIN1882118 and ABIN2839456) in HL-60 cell line lysates (35 µg/lane). POLG2 (arrow) was detected using the purified Pab.

Immunohistochemistry (Paraffin-embedded Sections)

Image 3. Formalin-fixed and paraffin-embedded human skeletal muscle reacted with POLG2 Antibody (C-term), which was peroxidase-conjugated to the secondary antibody, followed by DAB staining. This data demonstrates the use of this antibody for immunohistochemistry, clinical relevance has not been evaluated.