

Datasheet for ABIN1882123

anti-SHP1 antibody (AA 247-277)

4 Images

2 Publications

[Go to Product page](#)

Overview

Quantity:	400 µL
Target:	SHP1 (PTPN6)
Binding Specificity:	AA 247-277
Reactivity:	Human
Host:	Rabbit
Clonality:	Polyclonal
Conjugate:	This SHP1 antibody is un-conjugated
Application:	Western Blotting (WB), Immunofluorescence (IF), Immunohistochemistry (Paraffin-embedded Sections) (IHC (p))

Product Details

Immunogen:	This PTPN6 antibody is generated from rabbits immunized with a KLH conjugated synthetic peptide between 247-277 amino acids from the Central region of human PTPN6.
Clone:	RB17225
Isotype:	Ig Fraction
Purification:	This antibody is prepared by Saturated Ammonium Sulfate (SAS) precipitation followed by dialysis against PBS.

Target Details

Target:	SHP1 (PTPN6)
Alternative Name:	PTPN6 (PTPN6 Products)

Target Details

Background:	PTPN6 is a member of the protein tyrosine phosphatase (PTP) family. PTPs are known to be signaling molecules that regulate a variety of cellular processes including cell growth, differentiation, mitotic cycle, and oncogenic transformation. N-terminal part of this PTP contains two tandem Src homolog (SH2) domains, which act as protein phospho-tyrosine binding domains, and mediate the interaction of this PTP with its substrates. This PTP is expressed primarily in hematopoietic cells, and functions as an important regulator of multiple signaling pathways in hematopoietic cells. This PTP has been shown to interact with, and dephosphorylate a wide spectrum of phospho-proteins involved in hematopoietic cell signaling.
Molecular Weight:	67561
NCBI Accession:	NP_002822 , NP_536858 , NP_536859
UniProt:	P29350
Pathways:	JAK-STAT Signaling , TCR Signaling , TLR Signaling , Nuclear Receptor Transcription Pathway , Positive Regulation of Peptide Hormone Secretion , Steroid Hormone Mediated Signaling Pathway , Response to Growth Hormone Stimulus , Regulation of Leukocyte Mediated Immunity , CXCR4-mediated Signaling Events , Signaling Events mediated by VEGFR1 and VEGFR2 , BCR Signaling

Application Details

Application Notes:	IF: 1:100. WB: 1:1000. WB: 1:1000. IHC-P: 1:10~50
Restrictions:	For Research Use only

Handling

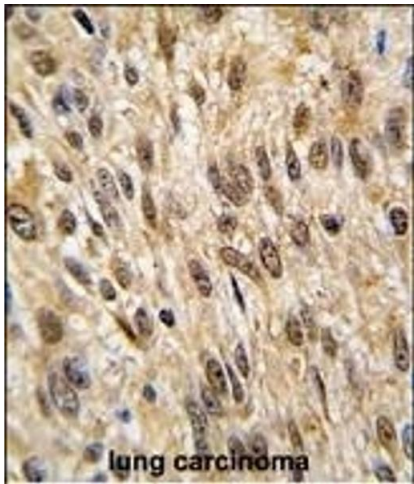
Format:	Liquid
Buffer:	Purified polyclonal antibody supplied in PBS with 0.09 % (W/V) sodium azide.
Preservative:	Sodium azide
Precaution of Use:	This product contains Sodium azide: a POISONOUS AND HAZARDOUS SUBSTANCE which should be handled by trained staff only.
Storage:	4 °C,-20 °C
Expiry Date:	6 months

Publications

Product cited in: Korporaal, Koekman, Verhoef, van der Wal, Bezemer, Van Eck, Akkerman: "Downregulation of platelet responsiveness upon contact with LDL by the protein-tyrosine phosphatases SHP-1 and SHP-2." in: **Arteriosclerosis, thrombosis, and vascular biology**, Vol. 29, Issue 3, pp. 372-9, (2009) ([PubMed](#)).

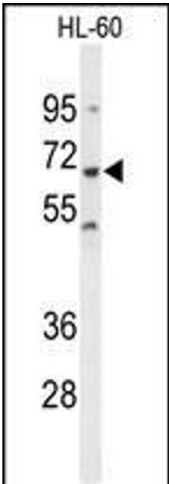
Cho, Oh, Zhu: "Tyrosine phosphatase SHP-1 in oxidative stress and development of allergic airway inflammation." in: **American journal of respiratory cell and molecular biology**, Vol. 39, Issue 4, pp. 412-9, (2008) ([PubMed](#)).

Images



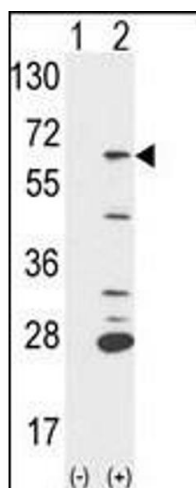
Immunohistochemistry (Paraffin-embedded Sections)

Image 1. Formalin-fixed and paraffin-embedded human lung carcinoma tissue reacted with PTPN6 antibody (Center), which was peroxidase-conjugated to the secondary antibody, followed by DAB staining. This data demonstrates the use of this antibody for immunohistochemistry, clinical relevance has not been evaluated.



Western Blotting

Image 2. Western blot analysis of PTPN6 Antibody (Center) (ABIN1882123 and ABIN2839434) in HL-60 cell line lysates (35 µg/lane).PTPN6 (arrow) was detected using the purified Pab.



Western Blotting

Image 3. Western blot analysis of PTPN6 (arrow) using rabbit polyclonal PTPN6 Antibody (Center) (ABIN1882123 and ABIN2839434). 293 cell lysates (2 µg/lane) either nontransfected (Lane 1) or transiently transfected with the PTPN6 gene (Lane 2) (Origene Technologies). (2 µg/mL)

Please check the [product details page](#) for more images. Overall 4 images are available for ABIN1882123.