

Datasheet for ABIN1882125
anti-RENT1/UPF1 antibody (N-Term)**1** Image**5** Publications[Go to Product page](#)

Overview

Quantity:	400 µL
Target:	RENT1/UPF1 (UPF1)
Binding Specificity:	AA 7-37, N-Term
Reactivity:	Human
Host:	Rabbit
Clonality:	Polyclonal
Conjugate:	This RENT1/UPF1 antibody is un-conjugated
Application:	Western Blotting (WB)

Product Details

Immunogen:	This RENT1 antibody is generated from rabbits immunized with a KLH conjugated synthetic peptide between 7-37 amino acids from the N-terminal region of human RENT1.
Clone:	RB8018
Isotype:	Ig Fraction
Predicted Reactivity:	M
Purification:	This antibody is prepared by Saturated Ammonium Sulfate (SAS) precipitation followed by dialysis against PBS.

Target Details

Target:	RENT1/UPF1 (UPF1)
---------	-------------------

Target Details

Alternative Name:	RENT1 (UPF1 Products)
Background:	RENT1 is part of a post-splicing multiprotein complex involved in both mRNA nuclear export and mRNA surveillance. mRNA surveillance detects exported mRNAs with truncated open reading frames and initiates nonsense-mediated mRNA decay (NMD). When translation ends upstream from the last exon-exon junction, this triggers NMD to degrade mRNAs containing premature stop codons. This protein is located only in the cytoplasm. When translation ends, it interacts with the protein that is a functional homolog of yeast Upf2p to trigger mRNA decapping.
Molecular Weight:	124345
NCBI Accession:	NP_002902
UniProt:	Q92900
Pathways:	SARS-CoV-2 Protein Interactome

Application Details

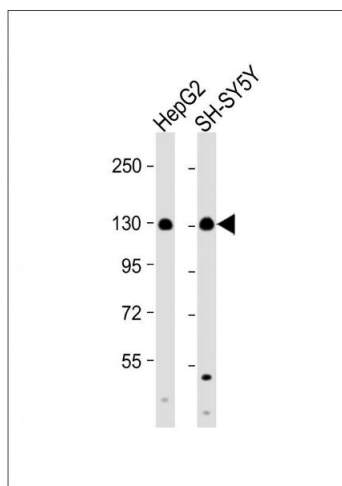
Application Notes:	WB: 1:1000
Restrictions:	For Research Use only

Handling

Format:	Liquid
Buffer:	Purified polyclonal antibody supplied in PBS with 0.09 % (W/V) sodium azide.
Preservative:	Sodium azide
Precaution of Use:	This product contains Sodium azide: a POISONOUS AND HAZARDOUS SUBSTANCE which should be handled by trained staff only.
Storage:	4 °C,-20 °C
Expiry Date:	6 months

Publications

Product cited in:	Hirakawa, Nakayama, Shibata, Sekine: "Association of cellular localization of glycogen synthase kinase 3beta in the digestive tract with cancer development." in: Oncology reports , Vol. 22, Issue 3, pp. 481-5, (2009) (PubMed).
-------------------	---



Western Blotting

Image 1. All lanes : Anti-RENT1 Antibody (N-term E22) at 1:1000 dilution Lane 1: HepG2 whole cell lysate Lane 2: SH-SY5Y whole cell lysate Lysates/proteins at 20 µg per lane. Secondary Goat Anti-Rabbit IgG, (H+L), Peroxidase conjugated at 1/10000 dilution. Predicted band size : 124 kDa Blocking/Dilution buffer: 5 % NFDM/TBST.