



[Go to Product page](#)

Datasheet for ABIN1882128

anti-SARS-CoV Spike antibody (AA 532-562)

1 Image

8 Publications

Overview

Quantity:	400 µL
Target:	SARS-CoV Spike (SARS-CoV S)
Binding Specificity:	AA 532-562
Reactivity:	SARS Coronavirus (SARS-CoV)
Host:	Rabbit
Clonality:	Polyclonal
Application:	Western Blotting (WB)

Product Details

Immunogen:	This SARS virus Sm antibody is generated from rabbits immunized with a KLH conjugated synthetic peptide between 532-562 amino acids from the middle of SARS CoV Spike protein.
Clone:	RB3983-3984
Purification:	This antibody is prepared by Saturated Ammonium Sulfate (SAS) precipitation followed by dialysis against PBS. Purified Rabbit Polyclonal Antibody (Pab)

Target Details

Target:	SARS-CoV Spike (SARS-CoV S)
Abstract:	SARS-CoV S Products
Target Type:	Viral Protein
Background:	An outbreak of atypical pneumonia, referred to as severe acute respiratory syndrome (SARS) and first identified in Guangdong Province, China, has spread to several countries. The severity

Target Details

of this disease is such that the mortality rate appears to be approx. 3 to 6%. A number of laboratories worldwide have undertaken the identification of the causative agent. The National Microbiology Laboratory in Canada obtained the Tor2 isolate from a patient in Toronto, and succeeded in growing a coronavirus-like agent in African Green Monkey Kidney (Vero E6) cells. This coronavirus has been named publicly by the World Health Organization and member laboratories as SARS virus. The SARS membrane proteins, including the major proteins S (Spike) and M (Membrane), are inserted into the endoplasmic reticulum Golgi intermediate compartment (ERGIC) while full length replicated RNA (+ strands) assemble with the N (nucleocapsid) protein. The virus then migrates through the Golgi complex and eventually exits the cell, likely by exocytosis. The site of viral attachment to the host cell resides within the S protein. Oligomeric spike (S) glycoproteins extend from SARS membranes. These integral membrane proteins assemble within the endoplasmic reticulum of infected cells and are subsequently endoproteolyzed in the Golgi, generating noncovalently associated S1 and S2 fragments. Once on the surface of infected cells and virions, peripheral S1 fragments bind carcinoembryonic antigen-related cell adhesion molecule (CEACAM) receptors, and this triggers membrane fusion reactions mediated by integral membrane S2 fragments.

Synonyms: S, Spike glycoprotein, E2, Peplomer protein, Spike protein S1, Spike protein S2

UniProt: [P59594](#)

Application Details

Application Notes: WB: 1:1000

Restrictions: For Research Use only

Handling

Format: Liquid

Concentration: 2 mg/mL

Buffer: Purified polyclonal antibody supplied in PBS with 0.09 % (W/V) sodium azide.

Preservative: Sodium azide

Precaution of Use: WARNING: Reagents contain sodium azide. Sodium azide is very toxic if ingested or inhaled. Avoid contact with skin, eyes, or clothing. Wear eye or face protection when handling. If skin or eye contact occurs, wash with copious amounts of water. If ingested or inhaled, contact a physician immediately. Sodium azide yields toxic hydrazoic acid under acidic conditions. Dilute

Handling

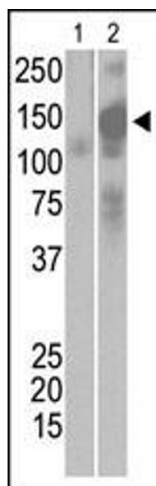
azide-containing compounds in running water before discarding to avoid accumulation of potentially explosive deposits in lead or copper plumbing.

Publications

Product cited in: Mei, Li, Chu, Yiu, Lo: "The inhibitory effects of silver diamine fluoride at different concentrations on matrix metalloproteinases." in: **Dental materials : official publication of the Academy of Dental Materials**, Vol. 28, Issue 8, pp. 903-8, (2012) ([PubMed](#)).

There are more publications referencing this product on: [Product page](#)

Images



Western Blotting

Image 1. The anti-SARS-Sm Pab (ABIN1882128 and ABIN2840581) is used in Western blot to detect recombinant Spike proteins, aa17-537 (Lane 1) and aa17-756 (Lane 2).