

Datasheet for ABIN1882130  
**anti-SERPINA3 antibody (C-Term)**[2 Images](#)[2 Publications](#)[Go to Product page](#)

## Overview

Quantity:	400 µL
Target:	SERPINA3
Binding Specificity:	AA 282-310, C-Term
Reactivity:	Human
Host:	Rabbit
Clonality:	Polyclonal
Conjugate:	This SERPINA3 antibody is un-conjugated
Application:	Western Blotting (WB), Flow Cytometry (FACS)

## Product Details

Immunogen:	This SERPINA3 antibody is generated from rabbits immunized with a KLH conjugated synthetic peptide between 282-310 amino acids from the C-terminal region of human SERPINA3.
Clone:	RB18483
Isotype:	Ig Fraction
Purification:	This antibody is prepared by Saturated Ammonium Sulfate (SAS) precipitation followed by dialysis against PBS.

## Target Details

Target:	SERPINA3
Alternative Name:	SERPINA3 ( <a href="#">SERPINA3 Products</a> )

## Target Details

**Background:** SERPINA3 is a plasma protease inhibitor and member of the serine protease inhibitor class. Polymorphisms in this protein appear to be tissue specific and influence protease targeting. Variations in this protein's sequence have been implicated in Alzheimer's disease, and deficiency of this protein has been associated with liver disease. Mutations have been identified in patients with Parkinson disease and chronic obstructive pulmonary disease.

**Molecular Weight:** 47651

**NCBI Accession:** [NP\\_001076](#)

**UniProt:** [P01011](#)

## Application Details

**Application Notes:** WB: 1:1000. FC: 1:10~50

**Restrictions:** For Research Use only

## Handling

**Format:** Liquid

**Buffer:** Purified polyclonal antibody supplied in PBS with 0.09 % (W/V) sodium azide.

**Preservative:** Sodium azide

**Precaution of Use:** This product contains Sodium azide: a POISONOUS AND HAZARDOUS SUBSTANCE which should be handled by trained staff only.

**Storage:** 4 °C, -20 °C

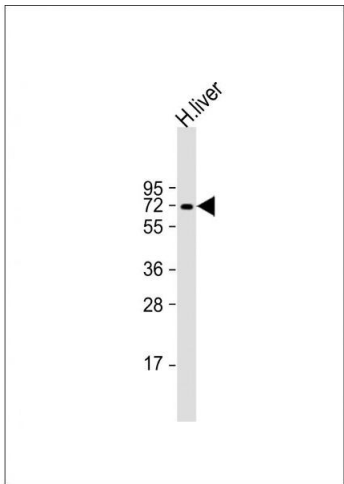
**Expiry Date:** 6 months

## Publications

**Product cited in:** Wendeler, Pabst, Wang, Strouse, Wang, Hunter: "Process-scale purification and analytical characterization of highly gamma-carboxylated recombinant human prothrombin." in: **Journal of chromatography. A**, Vol. 1325, pp. 171-8, (2014) ([PubMed](#)).

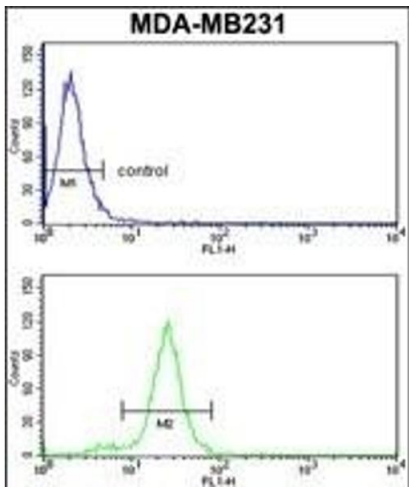
Yang, Ko, Yang, Kim, Seo, Park, Choi, Seong, Kweon: "Interleukin-1 promotes coagulation, which is necessary for protective immunity in the lung against Streptococcus pneumoniae infection." in: **The Journal of infectious diseases**, Vol. 207, Issue 1, pp. 50-60, (2012) ([PubMed](#)).

Lim, Joy, Hill, San Brian Chia: "Novel agmatine and agmatine-like peptidomimetic inhibitors of the West Nile virus NS2B/NS3 serine protease." in: **European journal of medicinal chemistry**, Vol. 46, Issue 7, pp. 3130-4, (2011) ([PubMed](#)).



Western Blotting

**Image 1.** Anti-SERPINA3 Antibody (C-term) at 1:1000 dilution + human liver lysate Lysates/proteins at 20 µg per lane. Secondary Goat Anti-Rabbit IgG, (H+L), Peroxidase conjugated at 1/10000 dilution. Predicted band size : 48 kDa Blocking/Dilution buffer: 5 % NFDm/TBST.



Flow Cytometry

**Image 2.** SERPINA3 Antibody (C-term) (ABIN1882130 and ABIN2841450) flow cytometry analysis of MDA-M cells (bottom histogram) compared to a negative control cell (top histogram). FITC-conjugated goat-anti-rabbit secondary antibodies were used for the analysis.