



[Go to Product page](#)

Datasheet for ABIN1882131  
**anti-SGK2 antibody (N-Term)**

2 Images

4 Publications

### Overview

Quantity:	400 µL
Target:	SGK2
Binding Specificity:	AA 1-30, N-Term
Reactivity:	Human, Mouse
Host:	Rabbit
Clonality:	Polyclonal
Conjugate:	This SGK2 antibody is un-conjugated
Application:	Western Blotting (WB), Immunohistochemistry (Paraffin-embedded Sections) (IHC (p))

### Product Details

Immunogen:	This SGK2 antibody is generated from rabbits immunized with a KLH conjugated synthetic peptide between 1-30 amino acids from the N-terminal region of human SGK2.
Clone:	RB1192
Isotype:	Ig Fraction
Purification:	This antibody is prepared by Saturated Ammonium Sulfate (SAS) precipitation followed by dialysis against PBS.

### Target Details

Target:	SGK2
Alternative Name:	SGK2 ( <a href="#">SGK2 Products</a> )

## Target Details

---

Background:	SGK2, a Ser/Thr protein kinase, is similar to serum- and glucocorticoid-induced protein kinase (SGK), but this gene product is not induced by serum or glucocorticoids. Expression is induced in response to signals that activate phosphatidylinositol 3-kinase, which is also true for SGK.
Molecular Weight:	47604
NCBI Accession:	<a href="#">NP_001186193</a> , <a href="#">NP_057360</a> , <a href="#">NP_733794</a>
UniProt:	<a href="#">Q9HBY8</a>

## Application Details

---

Application Notes:	WB: 1:1000. IHC-P: 1:50~100
Restrictions:	For Research Use only

## Handling

---

Format:	Liquid
Buffer:	Purified polyclonal antibody supplied in PBS with 0.09 % (W/V) sodium azide.
Preservative:	Sodium azide
Precaution of Use:	This product contains Sodium azide: a POISONOUS AND HAZARDOUS SUBSTANCE which should be handled by trained staff only.
Storage:	4 °C,-20 °C
Expiry Date:	6 months

## Publications

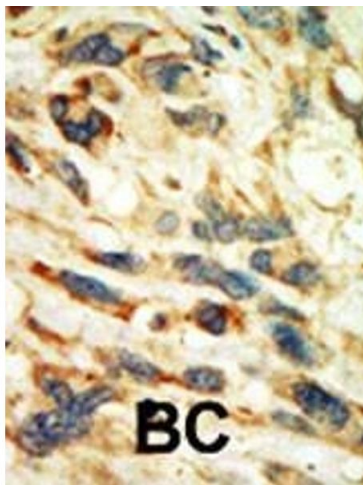
---

Product cited in:	<p>Meng, Yamagiwa, Taffetani, Han, Patel: "IL-6 activates serum and glucocorticoid kinase via p38alpha mitogen-activated protein kinase pathway." in: <b>American journal of physiology. Cell physiology</b>, Vol. 289, Issue 4, pp. C971-81, (2005) (<a href="#">PubMed</a>).</p> <p>Friedrich, Feng, Cohen, Risler, Vandewalle, Bröer, Wang, Pearce, Lang: "The serine/threonine kinases SGK2 and SGK3 are potent stimulators of the epithelial Na<sup>+</sup> channel alpha,beta,gamma-ENaC." in: <b>Pflügers Archiv : European journal of physiology</b>, Vol. 445, Issue 6, pp. 693-6, (2003) (<a href="#">PubMed</a>).</p> <p>Embark, Böhmer, Vallon, Luft, Lang: "Regulation of KCNE1-dependent K(+) current by the serum</p>
-------------------	--

and glucocorticoid-inducible kinase (SGK) isoforms." in: **Pflügers Archiv : European journal of physiology**, Vol. 445, Issue 5, pp. 601-6, (2003) ([PubMed](#)).

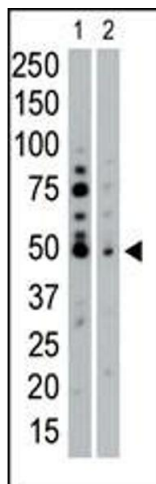
Gamper, Fillon, Feng, Friedrich, Lang, Henke, Huber, Kobayashi, Cohen, Lang: "K<sup>+</sup> channel activation by all three isoforms of serum- and glucocorticoid-dependent protein kinase SGK." in: **Pflügers Archiv : European journal of physiology**, Vol. 445, Issue 1, pp. 60-6, (2002) ([PubMed](#)).

Images



**Immunohistochemistry (Paraffin-embedded Sections)**

**Image 1.** Formalin-fixed and paraffin-embedded human cancer tissue reacted with the primary antibody, which was peroxidase-conjugated to the secondary antibody, followed by AEC staining. This data demonstrates the use of this antibody for immunohistochemistry, clinical relevance has not been evaluated. BC = breast carcinoma, HC = hepatocarcinoma.



**Western Blotting**

**Image 2.** The anti-SGK2 Pab (ABIN1882131 and ABIN2842048) is used in Western blot to detect SGK2 in HeLa cell lysate (Lane 1) and mouse pancreas tissue lysate (Lane 2).